



# ICHOM

International Consortium for  
Health Outcomes Measurement

## CHRONIC KIDNEY DISEASE DATA COLLECTION REFERENCE GUIDE

Version 1.0.0  
Revised: October 25<sup>th</sup>, 2017



Measuring  
results  
that matter

Chronic Kidney  
Disease



We are thrilled that you are interested in measuring outcomes for your chronic kidney disease patients according to ICHOM standards. It is our hope that this Reference Guide will facilitate the process of implementing our Standard Set and ensure collection of comparable data for global benchmarking and learning.

# Introducing ICHOM and the Reference Guide

ICHOM brings together patient representatives, clinician leaders, and registry leaders from all over the world to develop Standard Sets, comprehensive yet parsimonious sets of outcomes and case-mix variables we recommend all providers track.

Each Standard Set focuses on patient-centered results, and provides an internationally-agreed upon method for measuring each of these outcomes. We do this because we believe that standardized outcomes measurement will open up new possibilities to compare performance globally, allow clinicians to learn from each other, and rapidly improve the care we provide our patients.

Our Standard Sets include initial conditions and risk factors to enable meaningful case-mix adjustment globally, ensuring that comparisons of outcomes will take into account the differences in patient populations across not just providers, but also countries and regions. A comprehensive data dictionary, as well as scoring guides for patient-reported outcomes is included in the appendix.

## Working Group Members for Chronic Kidney Disease

The following individuals dedicated both time and expertise to develop the ICHOM Standard Set for Chronic Kidney Disease in partnership with ICHOM, under the leadership of Dr. Willem Jan Bos, Nephrologist at St. Antonius Hospital, Netherlands.

<b>Belgium</b> Andrea Stopper Wim van Biesen	<b>Netherlands</b> Hans Bart Kitty Jager Marc Hemmelder Türkan Terkivatan Willem Jan Bos Wouter Verberne	<b>Spain</b> Eduardo Parra Moncasi	<b>United Kingdom</b> Charlotte Roberts David Wheeler Elizabeth Gibbons Zofia Das-Gupta
<b>Germany</b> Markus Ketteler		<b>Taiwan</b> Chih-Wei Yang	<b>United States</b> Andrew Allegretti Katherine Tuttle Laurie Konowitz
<b>Mexico</b> Guillermo Garcia-Garcia		<b>United Arab Emirates</b> Muhammed Al Rohani	

# Supporting Organizations

The Chronic Kidney Disease Standard Set is made possible only through the support of the following organizations.

Thank you.



## Conditions and Treatment Approaches Covered for Chronic Kidney Disease

For Chronic Kidney Disease, the following conditions and treatment approaches (or interventions) are covered by our Standard Set.

Conditions	Chronic Kidney Disease Stage G3a/A3   Chronic Kidney Disease StageG 3b/A2/A3   Chronic Kidney Disease Stage G4   Chronic Kidney Disease Stage G5
Treatment Approaches	Pre-RRT = Pre-Renal Replacement Therapy   HD = Haemodialysis   PD = Peritoneal Dialysis   Tx = Renal Transplantation   CC = Conservative Care

Prognosis of CKD by GFR and albuminuria categories: KDIGO 2012				Persistent albuminuria categories, description and range		
				A1	A2	A3
				Normal to mildly increased	Moderately increased	Severely increased
				<30 mg/g <3 mg/mmol	30–300 mg/g 3–30 mg/mmol	>300 mg/g >30 mg/mmol
GFR categories (ml/min/1.73 m <sup>2</sup> ), description and range	G1	Normal or high	≥90			
	G2	Mildly decreased	60–89			
	G3a	Mildly to moderately decreased	45–59			
	G3b	Moderately to severely decreased	30–44			
	G4	Severely decreased	15–29			
	G5	Kidney failure	<15			

Permission obtained from KDIGO - [bit.ly/KDIGOGuide](https://bit.ly/KDIGOGuide)

# ICHOM Standard Set for Chronic Kidney Disease Overview

## Case-Mix Variables

Patient Population	Measure	Supporting Information	Timing	Data Source
Demographic Factors				
All patients	Age	N/A	Baseline	Patient-reported
	Sex	Sex at birth		
	Education level	Highest attained education		
Baseline Clinical Status				
All patients	Comorbidities	N/A	Baseline	Clinical
	BMI			Patient-reported
	Smoking			
	Primary renal disease			Clinical or Administrative data
Pre-RRT & CC patients	Renal function			Administrative data
HD patients	Vascular access type	N/A	Baseline	Clinical or Administrative data
Tx patients	Transplant type			Administrative data
	Kidney allograft function			
Pre-RRT, CC & Tx patients	Albuminuria			Administrative data
HD, PD, CC & Tx patients	Previous graft			Clinical or Administrative data
	Previous modality			



Outcomes overview

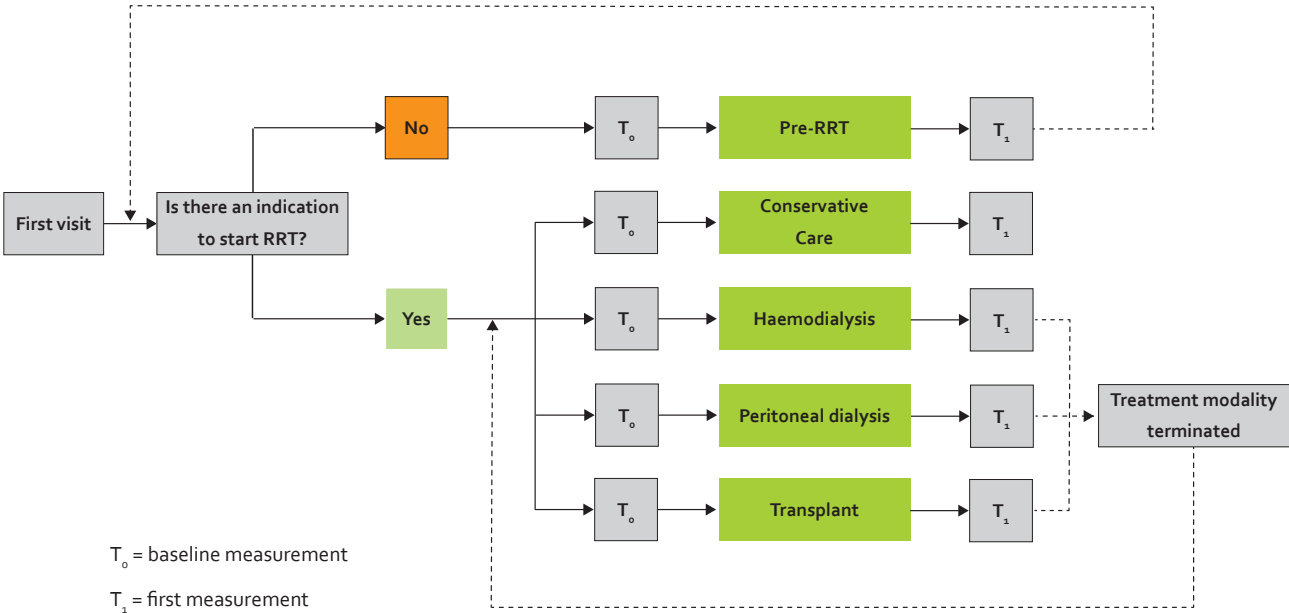
Patient Population	Measure	Supporting Information	Timing	Data Source
Survival				
All patients	Survival	Date & cause of death	Ongoing	Clinical or Administrative data
Burden of Care				
All patients	Hospitalisation	Number of admissions and days in hospital	Annually	Administrative data
	Cardiovascular events	Tracked with additional questions		Clinical or Administrative data
Patient-Reported Health & Wellbeing				
HD, PD & CC patients	Health-Related Quality of Life, Pain, Fatigue, Physical Function, Depression, Daily Activity	Tracked with PROMIS-29 + PROMIS Global Health, or RAND-36 or SF-36	6-monthly	Patient-reported
Pre-RRT & Tx patients	Health-Related Quality of Life, Pain, Fatigue, Physical Function, Depression, Daily Activity	Tracked with PROMIS-29 + PROMIS Global Health, or RAND-36 or SF-36	Annually	Patient-reported
Treatment-Specific				
Pre-RRT & CC patients	Renal function	Tracked with eGFR and/or Serum Creatinine	6-monthly	Administrative data
Tx patients	Kidney allograft function			
	Kidney allograft survival	Tracked with status of transplant	Annually	Clinical or Administrative data
	Malignancies	Solid tumour, skin cancer, haematological malignancies		
PD patients	PD modality survival	Tracked with status of PD modality survival		
HD patients	Vascular access survival	Tracked with status of vascular access	6-monthly	

Tier 2 Implementation – Important outcomes

Patient Population	Measure	Supporting Information	Timing	Data Source
Treatment-Specific				
HD, PD & Tx patients	Bacteraemia	Tracked with positive blood culture with clinical signs	6-monthly	Clinical
Pre-RRT, CC & Tx patients	Albuminuria	Tracked with uACR or uPCR	Annually	Administrative data
PD patients	Peritonitis	Clinically suspected and/or culture-proven peritonitis	6-monthly	Clinical
Tx patients	Acute rejection	Clinically-suspected or biopsy-proven	6-monthly for the first year, then annually	

# Treatment Pathway

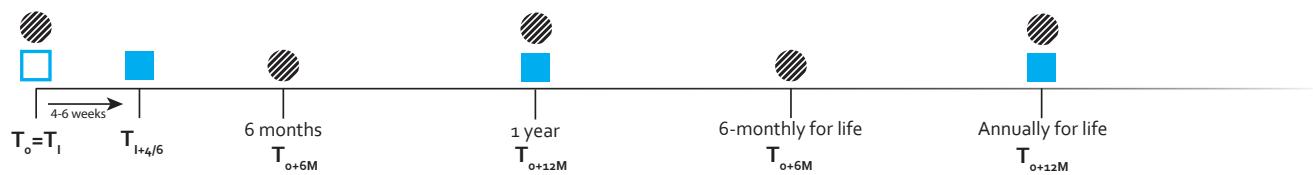
The following map illustrates how the patient in each modality will be transferred between treatment modalities, where necessary.



# Follow-Up Timeline and Sample Questionnaires

The following timeline illustrates when Standard Set variables should be collected from patients, clinicians, and administrative sources. Links to the sample questionnaires may be found in the legend below.

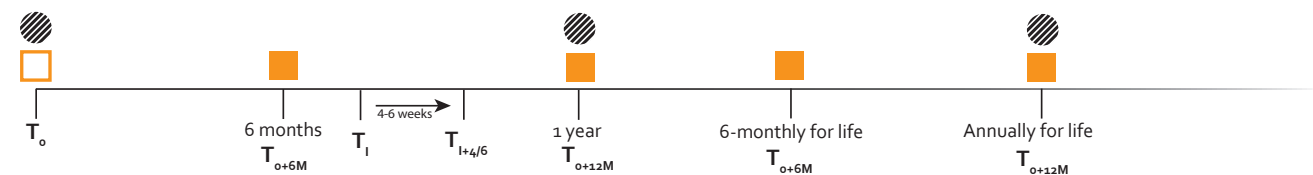
EXAMPLE 1: Newly diagnosed hypertension with initiation of new therapy.



EXAMPLE 2: New entry into Set with established hypertension and no change in therapy.



EXAMPLE 3a: Clinical incident at less than 4.5 months after most recent routing review time-point.



EXAMPLE 3b: Clinical incident at more than 4.5 months after most recent routing review time-point.



The following questionnaires should be administered at the indicated time points

- Patient-Reported Form
- Baseline Clinical Form
- 6-Monthly & Annual Clinical Form
- Baseline Clinical Form
- 6-Monthly & Annual Clinical Form
- Baseline Clinical Form
- 6-Monthly & Annual Clinical Form



# Collecting Patient-Reported Outcome Measures

Because of varying costs and licensing requirements of tools, the ICHOM chronic kidney disease working group recommends using one of the following options to measure health-related quality of life, fatigue, pain, physical function, depression and daily activity:

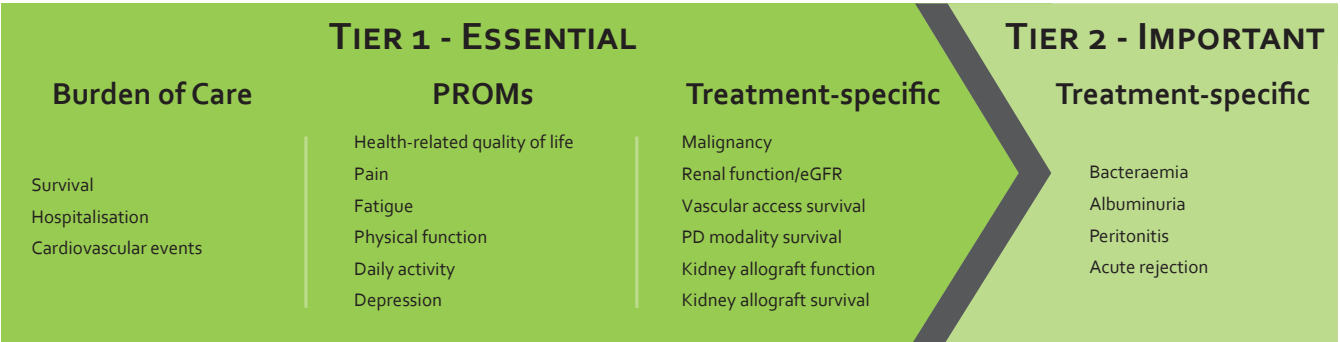
- The Optum™ SF-36v2® Health Survey **OR**
- PROMIS-Global Health **AND** PROMIS-29 **OR**
- RAND-36

For cost and licensing information, please refer to the table below. For instructions on comparing scores between these tools, please refer to the PROsetta Stone® information below.

Chronic Kidney Disease Survey Used	Licensing Information	Scoring Guide
The Optum™ SF-36v2® Health Survey	The SF-36v2 Health Survey requires a license agreement prior to the use or reproduction of the tool. Information on how to obtain a license can be found here: <a href="https://bit.ly/SF36LIC">bit.ly/SF36LIC</a>	The scoring guide for the SF36v2 is only available upon a license agreement being made
PROMIS-Global Health	Free for use in clinical practice and a license is not required. Information about available translations can be found here: <a href="http://www.nihpromis.org/measures/translations">http://www.nihpromis.org/measures/translations</a>	The scoring guide for the PROMIS-Global Health can be found at: <a href="https://bit.ly/PROMISGLOBALSCORE">bit.ly/PROMISGLOBALSCORE</a>
PROMIS-29		The scoring guide for the PROMIS-29 can be found at: <a href="https://bit.ly/PROMIS29SCORE">bit.ly/PROMIS29SCORE</a>
RAND-36	Free for use in clinical practice and a license is not required. The RAND-36 is available in English and Arabic. Both versions can be found here: <a href="https://www.rand.org/health/surveys_tools/mos/36-item-short-form.html">https://www.rand.org/health/surveys_tools/mos/36-item-short-form.html</a>	The scoring guide for the RAND-36 can be found at: <a href="https://bit.ly/RAND36SCORE">bit.ly/RAND36SCORE</a>
PROsetta Stone®	Developed and applied methods to link the Patient-Reported Outcomes Measurement Information System (PROMIS) with other related instruments (e.g., SF-36) to expand the range of PRO assessment options within a common, standardized metric. It provides equivalent scores for different scales that measure the same health outcome. <a href="http://www.prosettastone.org/Pages/default.aspx">http://www.prosettastone.org/Pages/default.aspx</a>	

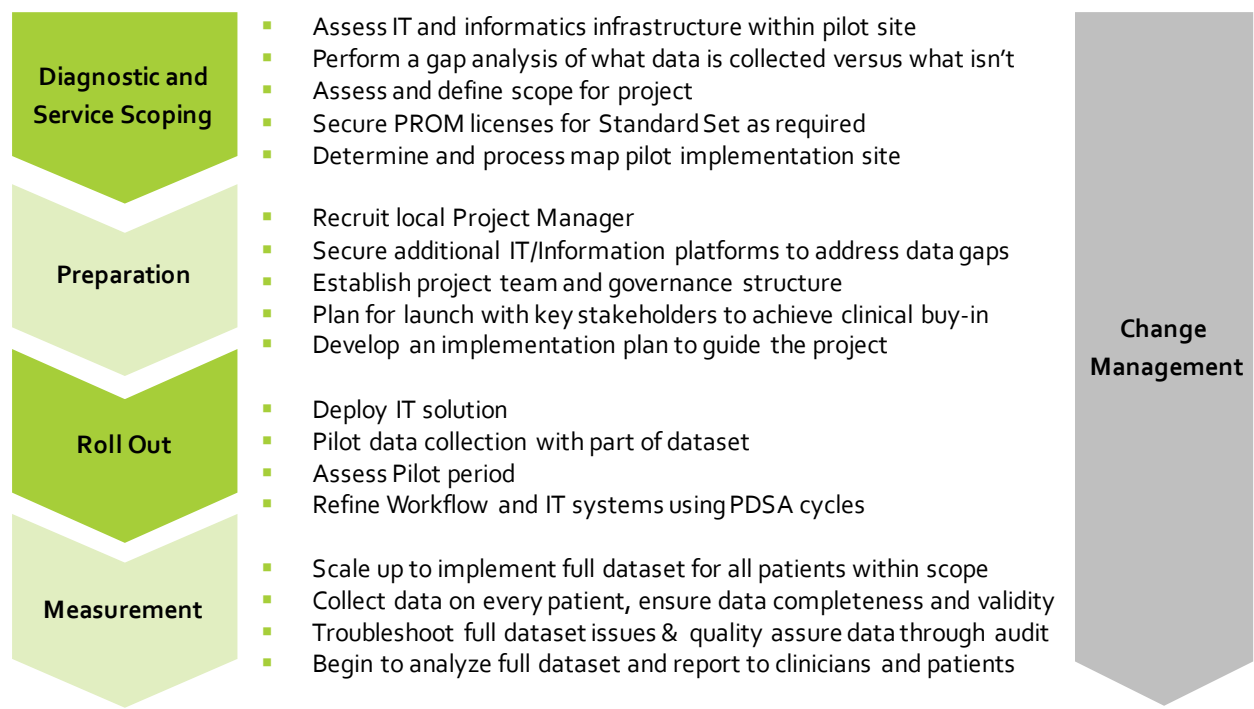
# The Growing ICHOM Community

There is a growing community of healthcare providers implementing the ICHOM Standard Sets. To support your organisation in implementing the set and the measurement of outcomes data, we have outlined a framework to guide the implementation and reporting of patient-centred outcomes.



## Implementation framework:

The framework below outlines the structured process to guide the implementation of an ICHOM Standard Set at your organisation. Typically, an implementation project takes 9 months to complete.



Translating the Set Tools:

PROM tools within the ICHOM Sets are available in a number of languages. To check the availability of translations, we advise contacting the Tool authors directly to obtain and translate the PROM surveys into your desired language. To independently translate PROM surveys, we recommend following the 10 steps outlined below: \*<sup>1</sup>

Step 1	Preparation	Initial work carried out before the translation work begins
Step 2	Forward Translation	Translation of the original language, also called source, version of the instrument into another language, often called the target language
Step 3	Reconciliation	Comparing and merging more than one forward translation into a single forward translation
Step 4	Back Translation	Translation of the new language version back into the original language
Step 5	Back Translation Review	Comparison of the back-translated versions of the instrument with the original to highlight and investigate discrepancies between the original and the reconciled translation, which is then revised in the process of resolving the issues
Step 6	Harmonization	Comparison of back translations of multiple language versions with each other and the original instrument to highlight discrepancies between the original and its derivative translations, as well as to achieve a consistent approach to translation problems
Step 7	Cognitive Debriefing	Testing the instrument on a small group of relevant patients or lay people in order to test alternative wording and to check understandability, interpretation, and cultural relevance of the translation
Step 8	Review of Cognitive Debriefing Results and Finalisation	Comparison of the patients’ or lay persons’ interpretation of the translation with the original version to highlight and amend discrepancies
Step 9	Proofreading	Final review of the translation to highlight and correct any typographic, grammatical or other errors
Step 10	Final Report	Report written at the end of the process documenting the development of each translation

\*These ten steps follow the ISPOR Principles of Good Practice: The Cross-Cultural Adaptation Process for Patient-Reported Outcomes Measures <sup>1</sup> Wild, D., Grove, A., Martin, M., Eremenco, S., McElroy, S., Verjee-Lorenz, A., et al. (2005). Principles of good practice for the translation and cultural adaptation process for patient-reported outcomes (PRO) measures: Report of the ISPOR task force for translation and cultural adaptation. Value in Health, 8(2), 94–104. doi:10.1111/j.1524-4733.2005.04054.x.

For any questions about implementation please contact us at: [implement@ichom.org](mailto:implement@ichom.org)



# Introduction to the Data Dictionary

This data dictionary is designed to help you measure the ICHOM Chronic Kidney Disease Standard Set as consistently as possible to the Working Group recommendation. ICHOM is actively preparing for benchmarking efforts based on this data, and all data submitted for comparisons will need to be transformed into the following data structure if not already structured as such. **We are happy to provide an Excel version of this data dictionary for technical use.**

Please timestamp all variables. Some Standard Set variables are collected at multiple timepoints, and we will ask you to submit these variables in a concatenated VARIABLEID\_TIMESTAMP form for future analyses. For example, VARIABLEID\_BASE (baseline); VARIABLEID\_6MO (6 month follow-up); VARIABLEID\_1YR (1 year follow-up), etc.

## Case-Mix Variables

CASE-MIX VARIABLES

<b>Variable ID:</b>	N/A
<b>Variable:</b>	Patient ID
<b>Definition:</b>	Indicate the patient's medical record number
<b>Supporting Definition:</b>	This number will not be shared with ICHOM. In the case patient-level data is submitted to ICHOM for benchmarking or research purposes, a separate ICHOM Patient Identifier will be created and cross-linking between the ICHOM Patient Identifier and the medical record number will only be known at the treating institution
<b>Inclusion Criteria:</b>	All patients
<b>Timing:</b>	On all forms
<b>Data Source:</b>	Administrative or clinical
<b>Type:</b>	Numerical
<b>Response Options:</b>	According to institution

## Demographic Factors

<b>Variable ID:</b>	AGE
<b>Variable:</b>	Age
<b>Definition:</b>	Indicate the patient's age
<b>Supporting Definition:</b>	Recorded as year of birth
<b>Inclusion Criteria:</b>	All patients
<b>Timing:</b>	Baseline
<b>Data Source:</b>	Patient-reported
<b>Type:</b>	Date by YYYY
<b>Response Options:</b>	YYYY
<b>Variable ID:</b>	SEX
<b>Variable:</b>	Sex at birth
<b>Definition:</b>	Indicate the patient's sex at birth
<b>Supporting Definition:</b>	N/A
<b>Inclusion Criteria:</b>	All patients
<b>Timing:</b>	Baseline
<b>Data Source:</b>	Patient-reported
<b>Type:</b>	Single answer
<b>Response Options:</b>	1 = Male 2 = Female 999 = Unknown
<b>Variable ID:</b>	SOCIO
<b>Variable:</b>	Education level
<b>Definition:</b>	Highest attained education
<b>Supporting Definition:</b>	Level of schooling defined in each country according to the International Standard Classification of Education

**Inclusion Criteria:** All patients  
**Timing:** Baseline and ongoing  
**Data Source:** Patient-reported  
**Type:** Single answer  
**Response Options:** 0 = None  
 1 = Primary  
 2 = Secondary  
 3 = Tertiary

## Baseline Characteristics

**Variable ID:** TREATMENTTYPE  
**Variable:** Treatment pathway  
**Definition:** Indicate which treatment pathway the patient is following  
**Supporting Definition:** N/A  
**Inclusion Criteria:** All patients  
**Timing:** Baseline  
**Data Source:** Administrative or clinical  
**Type:** Single answer  
**Response Options:** 1 = Pre-Renal Replacement Therapy  
 2 = Conservative care  
 3 = Haemodialysis  
 4 = Peritoneal Dialysis  
 5 = Functioning kidney transplant

**Variable ID:** PREVTREAT  
**Variable:** Previous modality treatment(s)  
**Definition:** Indicate the patient's previous modality treatment(s)  
**Supporting Definition:** N/A  
**Inclusion Criteria:** Tx, HD, PD, CC  
**Timing:** Baseline  
**Data Source:** Administrative or clinical  
**Type:** Multiple answer  
**Response Options:** 0 = None  
 1 = Haemodialysis  
 2 = Peritoneal dialysis  
 3 = Kidney transplant  
 999 = Unknown

**Variable ID:** SMOKING  
**Variable:** Smoking status  
**Definition:** Indicate the patient's category  
**Supporting Definition:** N/A  
**Inclusion Criteria:** All patients  
**Timing:** Baseline  
**Data Source:** Patient-reported  
**Type:** Single answer  
**Response Options:** 0 = Never  
 1 = Former  
 2 = Current

**Variable ID:** HEIGHT  
**Variable:** Height  
**Definition:** Indicate the patient's height  
**Supporting Definition:** Height and weight are used to calculate BMI  
**Inclusion Criteria:** All patients  
**Timing:** Baseline  
**Data Source:** Clinical  
**Type:** Numerical value  
**Response Options:** Numerical value of height in centimeters or inches

**Variable ID:** HEIGHTUNIT  
**Variable:** Height units  
**Definition:** Indicate units of height  
**Supporting Definition:** N/A  
**Inclusion Criteria:** All patients  
**Timing:** Baseline  
**Data Source:** Clinical  
**Type:** Single answer  
**Response Options:** 1 = centimeters  
 2 = inches

**Variable ID:** WEIGHT  
**Variable:** Weight  
**Definition:** Indicate the patient's weight  
**Supporting Definition:** Height and weight are used to calculate BMI  
**Inclusion Criteria:** All patients  
**Timing:** Baseline  
**Data Source:** Clinical  
**Type:** Numerical value  
**Response Options:** Numerical value of weight in kilograms or pounds

**Variable ID:** WEIGHTUNIT  
**Variable:** Weight units  
**Definition:** Indicate units of weight  
**Supporting Definition:** N/A  
**Inclusion Criteria:** All patients  
**Timing:** Baseline  
**Data Source:** Clinical  
**Type:** Single answer  
**Response Options:** 1 = kilograms  
 2 = pounds

## Baseline Condition Factors

**Variable ID:** PRIMRENDIS  
**Variable:** Primary renal disease  
**Definition:** Indicate the patient's primary renal disease  
**Supporting Definition:** N/A  
**Inclusion Criteria:** All patients  
**Timing:** Baseline  
**Data Source:** Administrative or clinical  
**Type:** Single answer  
**Response Options:** 1 = Uncertain aetiology  
 2 = Diabetes mellitus  
 3 = Glomerulonephritis  
 4 = Hypertension  
 5 = Polycystic kidney disease  
 6 = Pyelonephritis  
 7 = Renal vascular disease  
 8 = Other

**Variable ID:** BASEGRAFT  
**Variable:** Previous kidney allografts  
**Definition:** How many kidney allografts has the patient previously received (excluding current allograft)?  
**Supporting Definition:** N/A  
**Inclusion Criteria:** Tx, HD, PD, CC  
**Timing:** Baseline  
**Data Source:** Administrative or clinical  
**Type:** Numerical



<b>Response Options:</b>	N/A
<b>Variable ID:</b>	BASEHDTYPE
<b>Variable:</b>	Vascular access type
<b>Definition:</b>	Indicate the most recent type of vascular access
<b>Supporting Definition:</b>	N/A
<b>Inclusion Criteria:</b>	HD
<b>Timing:</b>	Baseline
<b>Data Source:</b>	Administrative or clinical
<b>Type:</b>	Single answer
<b>Response Options:</b>	1 = AV graft 2 = AV fistula 3 = Catheter
<b>Variable ID:</b>	BASETRANSTYPE
<b>Variable:</b>	Transplant type
<b>Definition:</b>	Indicate the type of the most recent transplant
<b>Supporting Definition:</b>	N/A
<b>Inclusion Criteria:</b>	Tx
<b>Timing:</b>	Baseline
<b>Data Source:</b>	Administrative or clinical
<b>Type:</b>	Single answer
<b>Response Options:</b>	1 = Deceased donor 2 = Living donor
<b>Variable ID:</b>	BASERFUNC
<b>Variable:</b>	Renal/kidney allograft function
<b>Definition:</b>	Indicate how the patient's baseline renal/kidney allograft function was measured
<b>Supporting Definition:</b>	N/A
<b>Inclusion Criteria:</b>	Pre-RRT, CC, Tx
<b>Timing:</b>	Baseline
<b>Data Source:</b>	Administrative data
<b>Type:</b>	Single answer
<b>Response Options:</b>	0 = No measurement taken 1 = Serum Creatinine 2 = eGFR 3 = Serum Creatinine + eGFR 999 = Unknown
<b>Variable ID:</b>	BASERFUNCDATE
<b>Variable:</b>	Renal function/kidney allograft measurement date
<b>Definition:</b>	Provide the date of baseline renal/kidney allograft function measurement
<b>Supporting Definition:</b>	N/A
<b>Inclusion Criteria:</b>	If "1 = Serum Creatinine", "2 = eGFR" or "3 = Serum Creatinine + eGFR" to BASERFUNC
<b>Timing:</b>	Baseline
<b>Data Source:</b>	Administrative data
<b>Type:</b>	Date by DD/MM/YYYY
<b>Response Options:</b>	DD/MM/YYYY
<b>Variable ID:</b>	BASERFUNCSCUNIT
<b>Variable:</b>	Serum Creatinine unit
<b>Definition:</b>	Indicate the units used for serum creatinine measurement
<b>Supporting Definition:</b>	N/A
<b>Inclusion Criteria:</b>	If "1 = Serum Creatinine" or "3 = Serum Creatinine + eGFR" to BASERFUNC
<b>Timing:</b>	Baseline
<b>Data Source:</b>	Administrative data
<b>Type:</b>	Single answer
<b>Response Options:</b>	1 = umol/l 2 = mg/dl
<b>Variable ID:</b>	BASERFUNCCAL

**Variable:** Serum Creatinine callibration  
**Definition:** Indicate which serum creatinine assay is used  
**Supporting Definition:** N/A  
**Inclusion Criteria:** If "1 = Serum Creatinine" or "3 = Serum Creatinine + eGFR" to BASERFUNC  
**Timing:** Baseline  
**Data Source:** Administrative data  
**Type:** Single answer  
**Response Options:** 1 = Jaffe  
                               2 = Enzymatic  
                               999 = Unknown

**Variable ID:** BASEIDMSCAL  
**Variable:** Isotope dilution mass spectrometry (IDMS) callibration  
**Definition:** Indicate if isotope dilution mass spectrometry is used  
**Supporting Definition:** N/A  
**Inclusion Criteria:** If "1 = Serum Creatinine" or "3 = Serum Creatinine + eGFR" to BASERFUNC  
**Timing:** Baseline  
**Data Source:** Administrative data  
**Type:** Single answer  
**Response Options:** 0 = No  
                               1 = Yes  
                               999 = Unknown

**Variable ID:** BASERFUNCSC  
**Variable:** Serum Creatinine  
**Definition:** Provide the serum creatinine value  
**Supporting Definition:** N/A  
**Inclusion Criteria:** If "1 = Serum Creatinine" or "3 = Serum Creatinine + eGFR" to BASERFUNC  
**Timing:** Baseline  
**Data Source:** Administrative data  
**Type:** Numerical  
**Response Options:** N/A

**Variable ID:** BASERFUNCEGFRMEAS  
**Variable:** eGFR equation  
**Definition:** Provide the eGFR equation  
**Supporting Definition:** N/A  
**Inclusion Criteria:** If "2 = eGFR" or "3 = Serum Creatinine + eGFR" to BASERFUNC  
**Timing:** Baseline  
**Data Source:** Administrative data  
**Type:** Single answer  
**Response Options:** 1 = CKD-EPI Serum Creatinine  
                               2 = MDRD-4  
                               3 = MDRD-6  
                               4 = Cockcroft-Gault  
                               5 = Other

**Variable ID:** BASERFUNCEGFR  
**Variable:** eGFR value  
**Definition:** Provide the eGFR value  
**Supporting Definition:** N/A  
**Inclusion Criteria:** If "2 = eGFR" or "3 = Serum Creatinine + eGFR" to BASERFUNC  
**Timing:** Baseline  
**Data Source:** Administrative data  
**Type:** Numerical  
**Response Options:** N/A

**Variable ID:** BASEALB  
**Variable:** Albuminuria  
**Definition:** Indicate whether albuminuria was measured  
**Supporting Definition:** Urine albumin/creatinine ratio in spot urine (preferred), or urine protein/creatinine

<b>Inclusion Criteria:</b>	ratio (alternative) Pre-RRT, CC, Tx
<b>Timing:</b>	Baseline
<b>Data Source:</b>	Administrative data
<b>Type:</b>	Single answer
<b>Response Options:</b>	0 = No 1 = Urine albumin/creatinine ratio in spot urine 2 = Urine protein/creatinine ratio in spot urine 999 = Unknown
<b>Variable ID:</b>	BASEALBUNIT
<b>Variable:</b>	Units of albuminuria measurement
<b>Definition:</b>	Indicate the units used for albuminuria measurement
<b>Supporting Definition:</b>	N/A
<b>Inclusion Criteria:</b>	If "1 = Urine albumin/creatinine ratio in spot urine" or "2 = Urine protein/creatinine ratio in spot urine" to BASEALB
<b>Timing:</b>	Baseline
<b>Data Source:</b>	Administrative data
<b>Type:</b>	Single answer
<b>Response Options:</b>	1 = mg/g 2 = mg/mmol
<b>Variable ID:</b>	BASEALBCAL
<b>Variable:</b>	Albuminuria callibration
<b>Definition:</b>	Indicate which albuminuria assay is used
<b>Supporting Definition:</b>	N/A
<b>Inclusion Criteria:</b>	If "1 = Urine albumin/creatinine ratio in spot urine" or "2 = Urine protein/creatinine ratio in spot urine" to BASEALB
<b>Timing:</b>	Baseline
<b>Data Source:</b>	Administrative data
<b>Type:</b>	Single answer
<b>Response Options:</b>	1 = Immunoassay 2 = Dipstick 999 = Unknown
<b>Variable ID:</b>	BASEALBMEASURE1
<b>Variable:</b>	Urine ACR
<b>Definition:</b>	Provide urine ACR in spot urine(mg/g, mg/mmol)
<b>Supporting Definition:</b>	N/A
<b>Inclusion Criteria:</b>	If "1 = Urine albumin/creatinine ratio in spot urine" to BASEALB
<b>Timing:</b>	Baseline
<b>Data Source:</b>	Administrative data
<b>Type:</b>	Numerical
<b>Response Options:</b>	Numerical value
<b>Variable ID:</b>	BASEALBMEASURE2
<b>Variable:</b>	Urine PCR
<b>Definition:</b>	Provide urine PCR in spot urine(mg/g, mg/mmol)
<b>Supporting Definition:</b>	N/A
<b>Inclusion Criteria:</b>	If "2 = Urine protein/creatinine ratio in spot urine" to BASEALB
<b>Timing:</b>	Baseline
<b>Data Source:</b>	Administrative data
<b>Type:</b>	Numerical
<b>Response Options:</b>	Numerical value
<b>Variable ID:</b>	BASEALBDATE
<b>Variable:</b>	Albuminuria measurement
<b>Definition:</b>	Provide the date of the most recent albuminuria measurement
<b>Supporting Definition:</b>	N/A
<b>Inclusion Criteria:</b>	If "1 = Urine albumin/creatinine ratio in spot urine" or "2 = Urine protein/creatinine ratio in spot urine" to BASEALB

<b>Timing:</b>	Baseline
<b>Data Source:</b>	Administrative data
<b>Type:</b>	Date by DD/MM/YYYY
<b>Response Options:</b>	DD/MM/YYYY
<b>Variable ID:</b>	BASEHBP
<b>Variable:</b>	High blood pressure
<b>Definition:</b>	Indicate whether the patient has hypertension and/or uses antihypertensive medication at baseline
<b>Supporting Definition:</b>	N/A
<b>Inclusion Criteria:</b>	All patients
<b>Timing:</b>	Baseline
<b>Data Source:</b>	Clinical
<b>Type:</b>	Single answer
<b>Response Options:</b>	0 = No 1 = Yes 999 = Unknown
<b>Variable ID:</b>	BASEDM
<b>Variable:</b>	Diabetes mellitus
<b>Definition:</b>	Indicate whether the patient has baseline diabetes mellitus
<b>Supporting Definition:</b>	N/A
<b>Inclusion Criteria:</b>	All patients
<b>Timing:</b>	Baseline
<b>Data Source:</b>	Clinical
<b>Type:</b>	Single answer
<b>Response Options:</b>	0 = No 1 = Diabetes mellitus type 1 2 = Diabetes mellitus type 2 999 = Unknown
<b>Variable ID:</b>	BASECLD
<b>Variable:</b>	Chronic lung disease
<b>Definition:</b>	Indicate whether the patient has baseline chronic lung disease
<b>Supporting Definition:</b>	N/A
<b>Inclusion Criteria:</b>	All patients
<b>Timing:</b>	Baseline
<b>Data Source:</b>	Clinical
<b>Type:</b>	Single answer
<b>Response Options:</b>	0 = No 1 = Yes 999 = Unknown
<b>Variable ID:</b>	BASELIVD
<b>Variable:</b>	Liver disease
<b>Definition:</b>	Indicate whether the patient has baseline chronic liver disease
<b>Supporting Definition:</b>	N/A
<b>Inclusion Criteria:</b>	All patients
<b>Timing:</b>	Baseline
<b>Data Source:</b>	Clinical
<b>Type:</b>	Single answer
<b>Response Options:</b>	0 = No 1 = Yes 999 = Unknown
<b>Variable ID:</b>	BASECVE
<b>Variable:</b>	Cardiovascular events
<b>Definition:</b>	Indicate whether the patient has had any baseline cardiovascular events
<b>Supporting Definition:</b>	Cardiovascular events of interest are acute myocardial infarction, stroke (excluding transient ischemic attacks), and limb amputation (excluding traumatic injury)
<b>Inclusion Criteria:</b>	All patients

<b>Timing:</b>	Baseline
<b>Data Source:</b>	Clinical
<b>Type:</b>	Single answer
<b>Response Options:</b>	0 = No 1 = Yes 999 = Unknown
<b>Variable ID:</b>	BASEAMI
<b>Variable:</b>	Myocardial infarction
<b>Definition:</b>	Indicate whether the patient has had a myocardial infarction
<b>Supporting Definition:</b>	N/A
<b>Inclusion Criteria:</b>	If "1 = yes" to BASECVE
<b>Timing:</b>	Baseline
<b>Data Source:</b>	Clinical
<b>Type:</b>	Single answer
<b>Response Options:</b>	0 = No 1 = Yes 999 = Unknown
<b>Variable ID:</b>	BASESTR
<b>Variable:</b>	Stroke (excluding transient ischemic attacks)
<b>Definition:</b>	Indicate whether the patient has had a stroke (excluding transient ischemic attacks)
<b>Supporting Definition:</b>	N/A
<b>Inclusion Criteria:</b>	If "1 = yes" to BASECVE
<b>Timing:</b>	Baseline
<b>Data Source:</b>	Clinical
<b>Type:</b>	Single answer
<b>Response Options:</b>	0 = No 1 = Yes 999 = Unknown
<b>Variable ID:</b>	BASELIMB
<b>Variable:</b>	Limb amputation (not due to traumatic injury)
<b>Definition:</b>	Indicate whether the patient has had a limb amputation (not due to traumatic injury)
<b>Supporting Definition:</b>	N/A
<b>Inclusion Criteria:</b>	If "1 = yes" to BASECVE
<b>Timing:</b>	Baseline
<b>Data Source:</b>	Clinical
<b>Type:</b>	Single answer
<b>Response Options:</b>	0 = No 1 = Yes 999 = Unknown
<b>Variable ID:</b>	BASEMALIG
<b>Variable:</b>	Malignancies
<b>Definition:</b>	Indicate whether the patient has any malignancies
<b>Supporting Definition:</b>	N/A
<b>Inclusion Criteria:</b>	All patients
<b>Timing:</b>	Baseline
<b>Data Source:</b>	Clinical
<b>Type:</b>	Single answer
<b>Response Options:</b>	0 = No 1 = Yes 999 = Unknown
<b>Variable ID:</b>	BASEMALIGTYPE1
<b>Variable:</b>	Malignancies type 1
<b>Definition:</b>	Indicate whether the malignancy is a solid tumour
<b>Supporting Definition:</b>	N/A

**Inclusion Criteria:** If "1 = yes" to BASEMALIG  
**Timing:** Baseline  
**Data Source:** Clinical  
**Type:** Single answer  
**Response Options:** 0 = No  
 1 = Yes  
 999 = Unknown

**Variable ID:** BASEMALIGTYPE2  
**Variable:** Malignancies type 2  
**Definition:** Indicate whether the malignancy is skin cancer  
**Supporting Definition:** N/A  
**Inclusion Criteria:** If "1 = yes" to BASEMALIG  
**Timing:** Baseline  
**Data Source:** Clinical  
**Type:** Single answer  
**Response Options:** 0 = No  
 1 = Yes  
 999 = Unknown

**Variable ID:** BASEMALIGTYPE3  
**Variable:** Malignancies type 3  
**Definition:** Indicate whether the malignancy is a haematological malignancy  
**Supporting Definition:** N/A  
**Inclusion Criteria:** If "1 = yes" to BASEMALIG  
**Timing:** Baseline  
**Data Source:** Clinical  
**Type:** Single answer  
**Response Options:** 0 = No  
 1 = Yes  
 999 = Unknown

## Outcomes

### Survival

**Variable ID:** DEATH  
**Variable:** Death  
**Definition:** Indicate whether the patient died  
**Supporting Definition:** N/A  
**Inclusion Criteria:** All patients  
**Timing:** Ongoing  
**Data Source:** Administrative or clinical  
**Type:** Single answer  
**Response Options:** 0 = No  
 1 = Yes

**Variable ID:** DEATHDATE  
**Variable:** Date of death  
**Definition:** Indicate the date of death  
**Supporting Definition:** N/A  
**Inclusion Criteria:** If "1 = yes" to DEATH  
**Timing:** Ongoing  
**Data Source:** Administrative or clinical  
**Type:** Date by DD/MM/YYYY  
**Response Options:** DD/MM/YYYY

**Variable ID:** DEATHCAUSE  
**Variable:** Cause of death  
**Definition:** Indicate the cause of death  
**Supporting Definition:** Use SMARRT categories  
**Inclusion Criteria:** If "1 = yes" to DEATH  
**Timing:** Ongoing

<b>Data Source:</b>	Clinical
<b>Type:</b>	Single answer
<b>Response Options:</b>	1 = Cardiovascular 2 = Infection 3 = Renal Replacement Therapy Complication 4 = Malignancy 5 = Treatment Withdrawal 6 = Other 999 = Unknown

## Burden of Care

<b>Variable ID:</b>	HOSPADMALL
<b>Variable:</b>	All admission to hospitals
<b>Definition:</b>	How many times has the patient been admitted (requiring at least an overnight stay) to a hospital/acute care facility in the last 12 months?
<b>Supporting Definition:</b>	N/A
<b>Inclusion Criteria:</b>	All patients
<b>Timing:</b>	Annually
<b>Data Source:</b>	Administrative data
<b>Type:</b>	Numerical
<b>Response Options:</b>	Numerical value

<b>Variable ID:</b>	HOSPADMTOTAL
<b>Variable:</b>	Total number of days hospitalised
<b>Definition:</b>	In total, how many days has the patient been hospitalised (requiring at least an overnight stay) at a hospital/acute care facility in the last 12 months?
<b>Supporting Definition:</b>	N/A
<b>Inclusion Criteria:</b>	If ≥1 to HOSPADMALL
<b>Timing:</b>	Annually
<b>Data Source:</b>	Administrative data
<b>Type:</b>	Numerical
<b>Response Options:</b>	Numerical value

<b>Variable ID:</b>	CARDIOEV
<b>Variable:</b>	Cardiovascular events
<b>Definition:</b>	Indicate if the patient was diagnosed with a cardiovascular event
<b>Supporting Definition:</b>	Cardiovascular events of interest are acute myocardial infarction, stroke (excluding transient ischemic attacks), and limb amputation (excluding traumatic injury)
<b>Inclusion Criteria:</b>	All patients
<b>Timing:</b>	Annually
<b>Data Source:</b>	Administrative or clinical
<b>Type:</b>	Single answer
<b>Response Options:</b>	0 = No 1 = Yes 999 = Unknown

<b>Variable ID:</b>	CARDIOAMI
<b>Variable:</b>	Acute Myocardial Infarction
<b>Definition:</b>	Indicate if the patient was diagnosed with an acute myocardial infarction
<b>Supporting Definition:</b>	N/A
<b>Inclusion Criteria:</b>	If "1 = yes" to CARDIOEV
<b>Timing:</b>	Annually
<b>Data Source:</b>	Administrative or clinical
<b>Type:</b>	Single answer
<b>Response Options:</b>	0 = No 1 = Yes 999 = Unknown

<b>Variable ID:</b>	AMIDATE
<b>Variable:</b>	Date of acute myocardial infarction



<b>Definition:</b>	Indicate the date of acute myocardial infarction diagnosis
<b>Supporting Definition:</b>	Multiple dates possible
<b>Inclusion Criteria:</b>	If "1 = yes" to CARDIOAMI
<b>Timing:</b>	Annually
<b>Data Source:</b>	Administrative or clinical
<b>Type:</b>	Date by DD/MM/YYYY
<b>Response Options:</b>	DD/MM/YYYY
<b>Variable ID:</b>	CARDIOSTR
<b>Variable:</b>	Stroke (excluding transient ischemic attacks)
<b>Definition:</b>	Indicate if the patient was diagnosed with a stroke
<b>Supporting Definition:</b>	N/A
<b>Inclusion Criteria:</b>	If "1 = yes" to CARDIOEV
<b>Timing:</b>	Annually
<b>Data Source:</b>	Administrative or clinical
<b>Type:</b>	Single answer
<b>Response Options:</b>	0 = No 1 = Yes 999 = Unknown
<b>Variable ID:</b>	STRDATE
<b>Variable:</b>	Date of stroke
<b>Definition:</b>	Indicate the date of stroke diagnosis
<b>Supporting Definition:</b>	Multiple dates possible
<b>Inclusion Criteria:</b>	If "1 = yes" to CARDIOSTR
<b>Timing:</b>	Annually
<b>Data Source:</b>	Administrative or clinical
<b>Type:</b>	Date by DD/MM/YYYY
<b>Response Options:</b>	DD/MM/YYYY
<b>Variable ID:</b>	CARDIOLIMB
<b>Variable:</b>	Limb amputation (not due to traumatic injury)
<b>Definition:</b>	Indicate if the patient was diagnosed with a limb amputation
<b>Supporting Definition:</b>	N/A
<b>Inclusion Criteria:</b>	If "1 = yes" to CARDIOEV
<b>Timing:</b>	Annually
<b>Data Source:</b>	Administrative or clinical
<b>Type:</b>	Single answer
<b>Response Options:</b>	0 = No 1 = Yes
<b>Variable ID:</b>	LIMBDATE
<b>Variable:</b>	Date of limb amputation
<b>Definition:</b>	Indicate the date of limb amputation diagnosis (not due to traumatic injury)
<b>Supporting Definition:</b>	Multiple dates possible
<b>Inclusion Criteria:</b>	If "1 = yes" to CARDIOLIMB
<b>Timing:</b>	Annually
<b>Data Source:</b>	Administrative or clinical
<b>Type:</b>	Date by DD/MM/YYYY
<b>Response Options:</b>	DD/MM/YYYY

## Patient-Reported Health & Wellbeing

<b>Variable ID:</b>	PROMCHOICE
<b>Variable:</b>	Which Patient-Reported Outcome Measure(s) are you using?
<b>Definition:</b>	Which Patient-Reported Outcome Measure(s) are you using?
<b>Supporting Definition:</b>	N/A
<b>Inclusion Criteria:</b>	All patients
<b>Timing:</b>	HD, PD & CC= Baseline and 6-monthly Pre-RRT & Tx = Baseline and annually
<b>Data Source:</b>	Patient-reported

<b>Type:</b>	Single answer
<b>Response Options:</b>	1 = PROMIS-Global Health & PROMIS-29 2 = RAND-36 3 = SF-36v2.0
<b>Variable ID:</b>	PROMIS-29_Q01
<b>Variable:</b>	PROMIS-29 - PFA11
<b>Definition:</b>	Are you able to do chores such as vacuuming or yard work?
<b>Supporting Definition:</b>	N/A
<b>Inclusion Criteria:</b>	If "1 = PROMIS-Global Health & PROMIS-29" to PROMCHOICE
<b>Timing:</b>	HD, PD & CC= Baseline and 6-monthly Pre-RRT & Tx = Baseline and annually
<b>Data Source:</b>	Patient-reported
<b>Type:</b>	Single answer
<b>Response Options:</b>	5 = Without any difficulty 4 = With a little difficulty 3 = With some difficulty 2 = With much difficulty 1 = Unable to do
<b>Variable ID:</b>	PROMIS-29_Q02
<b>Variable:</b>	PROMIS-29 - PFA21
<b>Definition:</b>	Are you able to go up and down stairs at a normal pace?
<b>Supporting Definition:</b>	N/A
<b>Inclusion Criteria:</b>	If "1 = PROMIS-Global Health & PROMIS-29" to PROMCHOICE
<b>Timing:</b>	HD, PD & CC= Baseline and 6-monthly Pre-RRT & Tx = Baseline and annually
<b>Data Source:</b>	Patient-reported
<b>Type:</b>	Single answer
<b>Response Options:</b>	5 = Without any difficulty 4 = With a little difficulty 3 = With some difficulty 2 = With much difficulty 1 = Unable to do
<b>Variable ID:</b>	PROMIS-29_Q03
<b>Variable:</b>	PROMIS-29 - PFA23
<b>Definition:</b>	Are you able to go for a walk of at least 15 minutes?
<b>Supporting Definition:</b>	N/A
<b>Inclusion Criteria:</b>	If "1 = PROMIS-Global Health & PROMIS-29" to PROMCHOICE
<b>Timing:</b>	HD, PD & CC= Baseline and 6-monthly Pre-RRT & Tx = Baseline and annually
<b>Data Source:</b>	Patient-reported
<b>Type:</b>	Single answer
<b>Response Options:</b>	5 = Without any difficulty 4 = With a little difficulty 3 = With some difficulty 2 = With much difficulty 1 = Unable to do
<b>Variable ID:</b>	PROMIS-29_Q04
<b>Variable:</b>	PROMIS-29 - PFA53
<b>Definition:</b>	Are you able to run errands and shop?
<b>Supporting Definition:</b>	N/A
<b>Inclusion Criteria:</b>	If "1 = PROMIS-Global Health & PROMIS-29" to PROMCHOICE
<b>Timing:</b>	HD, PD & CC= Baseline and 6-monthly Pre-RRT & Tx = Baseline and annually
<b>Data Source:</b>	Patient-reported
<b>Type:</b>	Single answer
<b>Response Options:</b>	5 = Without any difficulty

	4 = With a little difficulty 3 = With some difficulty 2 = With much difficulty 1 = Unable to do
<b>Variable ID:</b>	PROMIS-29_Qo5
<b>Variable:</b>	PROMIS-29 - EDANX01
<b>Definition:</b>	In the past 7 days... I felt fearful
<b>Supporting Definition:</b>	N/A
<b>Inclusion Criteria:</b>	If "1 = PROMIS-Global Health & PROMIS-29" to PROMCHOICE
<b>Timing:</b>	HD, PD & CC= Baseline and 6-monthly Pre-RRT & Tx = Baseline and annually
<b>Data Source:</b>	Patient-reported
<b>Type:</b>	Single answer
<b>Response Options:</b>	1 = Never 2 = Rarely 3 = Sometimes 4 = Often 5 = Always
<b>Variable ID:</b>	PROMIS-29_Qo6
<b>Variable:</b>	PROMIS-29 - EDANX40
<b>Definition:</b>	In the past 7 days... I found it hard to focus on anything other than my anxiety
<b>Supporting Definition:</b>	N/A
<b>Inclusion Criteria:</b>	If "1 = PROMIS-Global Health & PROMIS-29" to PROMCHOICE
<b>Timing:</b>	HD, PD & CC= Baseline and 6-monthly Pre-RRT & Tx = Baseline and annually
<b>Data Source:</b>	Patient-reported
<b>Type:</b>	Single answer
<b>Response Options:</b>	1 = Never 2 = Rarely 3 = Sometimes 4 = Often 5 = Always
<b>Variable ID:</b>	PROMIS-29_Qo7
<b>Variable:</b>	PROMIS-29 - EDANX41
<b>Definition:</b>	In the past 7 days... My worries overwhelmed me
<b>Supporting Definition:</b>	N/A
<b>Inclusion Criteria:</b>	If "1 = PROMIS-Global Health & PROMIS-29" to PROMCHOICE
<b>Timing:</b>	HD, PD & CC= Baseline and 6-monthly Pre-RRT & Tx = Baseline and annually
<b>Data Source:</b>	Patient-reported
<b>Type:</b>	Single answer
<b>Response Options:</b>	1 = Never 2 = Rarely 3 = Sometimes 4 = Often 5 = Always
<b>Variable ID:</b>	PROMIS-29_Qo8
<b>Variable:</b>	PROMIS-29 - EDANX53
<b>Definition:</b>	In the past 7 days... I felt uneasy
<b>Supporting Definition:</b>	N/A
<b>Inclusion Criteria:</b>	If "1 = PROMIS-Global Health & PROMIS-29" to PROMCHOICE
<b>Timing:</b>	HD, PD & CC= Baseline and 6-monthly

<b>Data Source:</b>	Pre-RRT & Tx = Baseline and annually
<b>Type:</b>	Patient-reported
<b>Response Options:</b>	Single answer
	1 = Never
	2 = Rarely
	3 = Sometimes
	4 = Often
	5 = Always
<b>Variable ID:</b>	PROMIS-29_Q09
<b>Variable:</b>	PROMIS-29 - EDDEP04
<b>Definition:</b>	In the past 7 days...
	I felt worthless
<b>Supporting Definition:</b>	N/A
<b>Inclusion Criteria:</b>	If "1 = PROMIS-Global Health & PROMIS-29" to PROMCHOICE
<b>Timing:</b>	HD, PD & CC= Baseline and 6-monthly
	Pre-RRT & Tx = Baseline and annually
<b>Data Source:</b>	Patient-reported
<b>Type:</b>	Single answer
<b>Response Options:</b>	1 = Never
	2 = Rarely
	3 = Sometimes
	4 = Often
	5 = Always
<b>Variable ID:</b>	PROMIS-29_Q10
<b>Variable:</b>	PROMIS-29 - EDDEP06
<b>Definition:</b>	In the past 7 days...
	I felt helpless
<b>Supporting Definition:</b>	N/A
<b>Inclusion Criteria:</b>	If "1 = PROMIS-Global Health & PROMIS-29" to PROMCHOICE
<b>Timing:</b>	HD, PD & CC= Baseline and 6-monthly
	Pre-RRT & Tx = Baseline and annually
<b>Data Source:</b>	Patient-reported
<b>Type:</b>	Single answer
<b>Response Options:</b>	1 = Never
	2 = Rarely
	3 = Sometimes
	4 = Often
	5 = Always
<b>Variable ID:</b>	PROMIS-29_Q11
<b>Variable:</b>	PROMIS-29 - EDDEP29
<b>Definition:</b>	In the past 7 days...
	I felt depressed
<b>Supporting Definition:</b>	N/A
<b>Inclusion Criteria:</b>	If "1 = PROMIS-Global Health & PROMIS-29" to PROMCHOICE
<b>Timing:</b>	HD, PD & CC= Baseline and 6-monthly
	Pre-RRT & Tx = Baseline and annually
<b>Data Source:</b>	Patient-reported
<b>Type:</b>	Single answer
<b>Response Options:</b>	1 = Never
	2 = Rarely
	3 = Sometimes
	4 = Often
	5 = Always
<b>Variable ID:</b>	PROMIS-29_Q12
<b>Variable:</b>	PROMIS-29 - EDDEP41
<b>Definition:</b>	In the past 7 days...

<b>Supporting Definition:</b>	I felt hopeless
<b>Inclusion Criteria:</b>	N/A
<b>Timing:</b>	HD, PD & CC= Baseline and 6-monthly Pre-RRT & Tx = Baseline and annually
<b>Data Source:</b>	Patient-reported
<b>Type:</b>	Single answer
<b>Response Options:</b>	1 = Never 2 = Rarely 3 = Sometimes 4 = Often 5 = Always
<b>Variable ID:</b>	PROMIS-29_Q13
<b>Variable:</b>	PROMIS-29 - Hi7
<b>Definition:</b>	During the past 7 days... I feel fatigued
<b>Supporting Definition:</b>	N/A
<b>Inclusion Criteria:</b>	If "1 = PROMIS-Global Health & PROMIS-29" to PROMCHOICE
<b>Timing:</b>	HD, PD & CC= Baseline and 6-monthly Pre-RRT & Tx = Baseline and annually
<b>Data Source:</b>	Patient-reported
<b>Type:</b>	Single answer
<b>Response Options:</b>	1 = Not at all 2 = A little bit 3 = Somewhat 4 = Quite a bit 5 = Very much
<b>Variable ID:</b>	PROMIS-29_Q14
<b>Variable:</b>	PROMIS-29 - AN3
<b>Definition:</b>	During the past 7 days... I have trouble starting things because I am tired
<b>Supporting Definition:</b>	N/A
<b>Inclusion Criteria:</b>	If "1 = PROMIS-Global Health & PROMIS-29" to PROMCHOICE
<b>Timing:</b>	HD, PD & CC= Baseline and 6-monthly Pre-RRT & Tx = Baseline and annually
<b>Data Source:</b>	Patient-reported
<b>Type:</b>	Single answer
<b>Response Options:</b>	1 = Not at all 2 = A little bit 3 = Somewhat 4 = Quite a bit 5 = Very much
<b>Variable ID:</b>	PROMIS-29_Q15
<b>Variable:</b>	PROMIS-29 - FATEXP <sub>41</sub>
<b>Definition:</b>	In the past 7 days... How run-down did you feel on average?
<b>Supporting Definition:</b>	N/A
<b>Inclusion Criteria:</b>	If "1 = PROMIS-Global Health & PROMIS-29" to PROMCHOICE
<b>Timing:</b>	HD, PD & CC= Baseline and 6-monthly Pre-RRT & Tx = Baseline and annually
<b>Data Source:</b>	Patient-reported
<b>Type:</b>	Single answer
<b>Response Options:</b>	1 = Not at all 2 = A little bit 3 = Somewhat 4 = Quite a bit

	5 = Very much
<b>Variable ID:</b>	PROMIS-29_Q16
<b>Variable:</b>	PROMIS-29 - FATEXP <sub>40</sub>
<b>Definition:</b>	In the past 7 days... How fatigued were you on average?
<b>Supporting Definition:</b>	N/A
<b>Inclusion Criteria:</b>	If "1 = PROMIS-Global Health & PROMIS-29" to PROMCHOICE
<b>Timing:</b>	HD, PD & CC= Baseline and 6-monthly Pre-RRT & Tx = Baseline and annually
<b>Data Source:</b>	Patient-reported
<b>Type:</b>	Single answer
<b>Response Options:</b>	1 = Not at all 2 = A little bit 3 = Somewhat 4 = Quite a bit 5 = Very much
<b>Variable ID:</b>	PROMIS-29_Q17
<b>Variable:</b>	PROMIS-29 - Sleep <sub>109</sub>
<b>Definition:</b>	In the past 7 days... My sleep quality was...
<b>Supporting Definition:</b>	N/A
<b>Inclusion Criteria:</b>	If "1 = PROMIS-Global Health & PROMIS-29" to PROMCHOICE
<b>Timing:</b>	HD, PD & CC= Baseline and 6-monthly Pre-RRT & Tx = Baseline and annually
<b>Data Source:</b>	Patient-reported
<b>Type:</b>	Single answer
<b>Response Options:</b>	5 = Very poor 4 = Poor 3 = Fair 2 = Good 1 = Very good
<b>Variable ID:</b>	PROMIS-29_Q18
<b>Variable:</b>	PROMIS-29 - Sleep <sub>116</sub>
<b>Definition:</b>	In the past 7 days... My sleep was refreshing...
<b>Supporting Definition:</b>	N/A
<b>Inclusion Criteria:</b>	If "1 = PROMIS-Global Health & PROMIS-29" to PROMCHOICE
<b>Timing:</b>	HD, PD & CC= Baseline and 6-monthly Pre-RRT & Tx = Baseline and annually
<b>Data Source:</b>	Patient-reported
<b>Type:</b>	Single answer
<b>Response Options:</b>	5 = Not at all 4 = A little bit 3 = Somewhat 2 = Quite a bit 1 = Very much
<b>Variable ID:</b>	PROMIS-29_Q19
<b>Variable:</b>	PROMIS-29 - Sleep <sub>20</sub>
<b>Definition:</b>	In the past 7 days... I had a problem with my sleep...
<b>Supporting Definition:</b>	N/A
<b>Inclusion Criteria:</b>	If "1 = PROMIS-Global Health & PROMIS-29" to PROMCHOICE
<b>Timing:</b>	HD, PD & CC= Baseline and 6-monthly Pre-RRT & Tx = Baseline and annually
<b>Data Source:</b>	Patient-reported
<b>Type:</b>	Single answer

<b>Response Options:</b>	5 = Not at all 4 = A little bit 3 = Somewhat 2 = Quite a bit 1 = Very much
<b>Variable ID:</b>	PROMIS-29_Q20
<b>Variable:</b>	PROMIS-29 - Sleep44
<b>Definition:</b>	In the past 7 days... I had difficulty falling asleep
<b>Supporting Definition:</b>	N/A
<b>Inclusion Criteria:</b>	If "1 = PROMIS-Global Health & PROMIS-29" to PROMCHOICE
<b>Timing:</b>	HD, PD & CC= Baseline and 6-monthly Pre-RRT & Tx = Baseline and annually
<b>Data Source:</b>	Patient-reported
<b>Type:</b>	Single answer
<b>Response Options:</b>	5 = Not at all 4 = A little bit 3 = Somewhat 2 = Quite a bit 1 = Very much
<b>Variable ID:</b>	PROMIS-29_Q21
<b>Variable:</b>	PROMIS-29 - SRPPER11_CaPS
<b>Definition:</b>	I have trouble doing all of my regular leisure activities with others
<b>Supporting Definition:</b>	N/A
<b>Inclusion Criteria:</b>	If "1 = PROMIS-Global Health & PROMIS-29" to PROMCHOICE
<b>Timing:</b>	HD, PD & CC= Baseline and 6-monthly Pre-RRT & Tx = Baseline and annually
<b>Data Source:</b>	Patient-reported
<b>Type:</b>	Single answer
<b>Response Options:</b>	5 = Never 4 = Rarely 3 = Sometimes 2 = Usually 1 = Always
<b>Variable ID:</b>	PROMIS-29_Q22
<b>Variable:</b>	PROMIS-29 - SRPPER18_CaPS
<b>Definition:</b>	I have trouble doing all of the family activities that I want to do
<b>Supporting Definition:</b>	N/A
<b>Inclusion Criteria:</b>	If "1 = PROMIS-Global Health & PROMIS-29" to PROMCHOICE
<b>Timing:</b>	HD, PD & CC= Baseline and 6-monthly Pre-RRT & Tx = Baseline and annually
<b>Data Source:</b>	Patient-reported
<b>Type:</b>	Single answer
<b>Response Options:</b>	5 = Never 4 = Rarely 3 = Sometimes 2 = Usually 1 = Always
<b>Variable ID:</b>	PROMIS-29_Q23
<b>Variable:</b>	PROMIS-29 - SRPPER23_CaPS
<b>Definition:</b>	I have trouble doing all of my usual work (include work at home)
<b>Supporting Definition:</b>	N/A
<b>Inclusion Criteria:</b>	If "1 = PROMIS-Global Health & PROMIS-29" to PROMCHOICE
<b>Timing:</b>	HD, PD & CC= Baseline and 6-monthly Pre-RRT & Tx = Baseline and annually
<b>Data Source:</b>	Patient-reported



<b>Type:</b>	Single answer
<b>Response Options:</b>	5 = Never 4 = Rarely 3 = Sometimes 2 = Usually 1 = Always
<b>Variable ID:</b>	PROMIS-29_Q24
<b>Variable:</b>	PROMIS-29 - SRPPER46_CaPS
<b>Definition:</b>	I have trouble doing all of the activities with friends that I want to do
<b>Supporting Definition:</b>	N/A
<b>Inclusion Criteria:</b>	If "1 = PROMIS-Global Health & PROMIS-29" to PROMCHOICE
<b>Timing:</b>	HD, PD & CC= Baseline and 6-monthly Pre-RRT & Tx = Baseline and annually
<b>Data Source:</b>	Patient-reported
<b>Type:</b>	Single answer
<b>Response Options:</b>	5 = Never 4 = Rarely 3 = Sometimes 2 = Usually 1 = Always
<b>Variable ID:</b>	PROMIS-29_Q25
<b>Variable:</b>	PROMIS-29 - PAININg
<b>Definition:</b>	In the past 7 days... How much did pain interfere with your day to day activities?
<b>Supporting Definition:</b>	N/A
<b>Inclusion Criteria:</b>	If "1 = PROMIS-Global Health & PROMIS-29" to PROMCHOICE
<b>Timing:</b>	HD, PD & CC= Baseline and 6-monthly Pre-RRT & Tx = Baseline and annually
<b>Data Source:</b>	Patient-reported
<b>Type:</b>	Single answer
<b>Response Options:</b>	1 = Not at all 2 = A little bit 3 = Somewhat 4 = Quite a bit 5 = Very much
<b>Variable ID:</b>	PROMIS-29_Q26
<b>Variable:</b>	PROMIS-29 - PAININ22
<b>Definition:</b>	In the past 7 days... How much did pain interfere with work around the home?
<b>Supporting Definition:</b>	N/A
<b>Inclusion Criteria:</b>	If "1 = PROMIS-Global Health & PROMIS-29" to PROMCHOICE
<b>Timing:</b>	HD, PD & CC= Baseline and 6-monthly Pre-RRT & Tx = Baseline and annually
<b>Data Source:</b>	Patient-reported
<b>Type:</b>	Single answer
<b>Response Options:</b>	1 = Not at all 2 = A little bit 3 = Somewhat 4 = Quite a bit 5 = Very much
<b>Variable ID:</b>	PROMIS-29_Q27
<b>Variable:</b>	PROMIS-29 - PAININ31
<b>Definition:</b>	In the past 7 days... How much did pain interfere with your ability to participate in social activities?
<b>Supporting Definition:</b>	N/A
<b>Inclusion Criteria:</b>	If "1 = PROMIS-Global Health & PROMIS-29" to PROMCHOICE

<b>Timing:</b>	HD, PD & CC= Baseline and 6-monthly Pre-RRT & Tx = Baseline and annually
<b>Data Source:</b>	Patient-reported
<b>Type:</b>	Single answer
<b>Response Options:</b>	1 = Not at all 2 = A little bit 3 = Somewhat 4 = Quite a bit 5 = Very much
<b>Variable ID:</b>	PROMIS-29_Q28
<b>Variable:</b>	PROMIS-29 - PAININ <sub>34</sub>
<b>Definition:</b>	In the past 7 days... How much did pain interfere with your household chores?
<b>Supporting Definition:</b>	N/A
<b>Inclusion Criteria:</b>	If "1 = PROMIS-Global Health & PROMIS-29" to PROMCHOICE
<b>Timing:</b>	HD, PD & CC= Baseline and 6-monthly Pre-RRT & Tx = Baseline and annually
<b>Data Source:</b>	Patient-reported
<b>Type:</b>	Single answer
<b>Response Options:</b>	1 = Not at all 2 = A little bit 3 = Somewhat 4 = Quite a bit 5 = Very much
<b>Variable ID:</b>	PROMIS-29_Q29
<b>Variable:</b>	PROMIS-29 - Globalo <sub>7</sub>
<b>Definition:</b>	In the past 7 days... How would you rate your pain on average?
<b>Supporting Definition:</b>	Indicate pain level on a scale of 1-10, where 0 = No pain, and 10 = Worst imaginable pain
<b>Inclusion Criteria:</b>	If "1 = PROMIS-Global Health & PROMIS-29" to PROMCHOICE
<b>Timing:</b>	HD, PD & CC= Baseline and 6-monthly Pre-RRT & Tx = Baseline and annually
<b>Data Source:</b>	Patient-reported
<b>Type:</b>	Single answer
<b>Response Options:</b>	Numerical value between 1 and 10
<b>Variable ID:</b>	PROMIS-G_Q01
<b>Variable:</b>	Globalo <sub>1</sub> - Patient reported general health status
<b>Definition:</b>	In general, would you say your health is:
<b>Supporting Definition:</b>	N/A
<b>Inclusion Criteria:</b>	If "1 = PROMIS-Global Health & PROMIS-29" to PROMCHOICE
<b>Timing:</b>	HD, PD & CC= Baseline and 6-monthly Pre-RRT & Tx = Baseline and annually
<b>Data Source:</b>	Patient-reported
<b>Type:</b>	Single answer
<b>Response Options:</b>	5 = Excellent 4 = Very good 3 = Good 2 = Fair 1 = Poor
<b>Variable ID:</b>	PROMIS-G_Q02
<b>Variable:</b>	Globalo <sub>2</sub> - Global patient reported health-related QOL
<b>Definition:</b>	In general, would you say your quality of life is:
<b>Supporting Definition:</b>	N/A
<b>Inclusion Criteria:</b>	If "1 = PROMIS-Global Health & PROMIS-29" to PROMCHOICE
<b>Timing:</b>	HD, PD & CC= Baseline and 6-monthly

<b>Data Source:</b>	Pre-RRT & Tx = Baseline and annually
<b>Type:</b>	Patient-reported
<b>Response Options:</b>	5 = Excellent 4 = Very good 3 = Good 2 = Fair 1 = Poor
<b>Variable ID:</b>	PROMIS-G_Q03
<b>Variable:</b>	Global03 - Patient reported general health status
<b>Definition:</b>	In general, how would you rate your physical health?
<b>Supporting Definition:</b>	N/A
<b>Inclusion Criteria:</b>	If "1 = PROMIS-Global Health & PROMIS-29" to PROMCHOICE
<b>Timing:</b>	HD, PD & CC= Baseline and 6-monthly Pre-RRT & Tx = Baseline and annually
<b>Data Source:</b>	Patient-reported
<b>Type:</b>	Single answer
<b>Response Options:</b>	5 = Excellent 4 = Very good 3 = Good 2 = Fair 1 = Poor
<b>Variable ID:</b>	PROMIS-G_Q04
<b>Variable:</b>	Global04 - Mood, global cognitive function
<b>Definition:</b>	In general, how would you rate your mental health, including your mood and your ability to think?
<b>Supporting Definition:</b>	N/A
<b>Inclusion Criteria:</b>	If "1 = PROMIS-Global Health & PROMIS-29" to PROMCHOICE
<b>Timing:</b>	HD, PD & CC= Baseline and 6-monthly Pre-RRT & Tx = Baseline and annually
<b>Data Source:</b>	Patient-reported
<b>Type:</b>	Single answer
<b>Response Options:</b>	5 = Excellent 4 = Very good 3 = Good 2 = Fair 1 = Poor
<b>Variable ID:</b>	PROMIS-G_Q05
<b>Variable:</b>	Global05 - Social participation
<b>Definition:</b>	In general, how would you rate your satisfaction with your social activities and relationships?
<b>Supporting Definition:</b>	N/A
<b>Inclusion Criteria:</b>	If "1 = PROMIS-Global Health & PROMIS-29" to PROMCHOICE
<b>Timing:</b>	HD, PD & CC= Baseline and 6-monthly Pre-RRT & Tx = Baseline and annually
<b>Data Source:</b>	Patient-reported
<b>Type:</b>	Single answer
<b>Response Options:</b>	5 = Excellent 4 = Very good 3 = Good 2 = Fair 1 = Poor
<b>Variable ID:</b>	PROMIS-G_Q06
<b>Variable:</b>	Globalog - Social participation
<b>Definition:</b>	In general, please rate how well you carry out your usual social activities and roles. (This includes activities at home, at work and in your community, and

	responsibilities as a parent, child, spouse, employee, friend, etc.)
<b>Supporting Definition:</b>	N/A
<b>Inclusion Criteria:</b>	If "1 = PROMIS-Global Health & PROMIS-29" to PROMCHOICE
<b>Timing:</b>	HD, PD & CC= Baseline and 6-monthly Pre-RRT & Tx = Baseline and annually
<b>Data Source:</b>	Patient-reported
<b>Type:</b>	Single answer
<b>Response Options:</b>	5 = Excellent 4 = Very good 3 = Good 2 = Fair 1 = Poor
<b>Variable ID:</b>	PROMIS-G_Qo7
<b>Variable:</b>	Globalo6 - Mobility
<b>Definition:</b>	To what extent are you able to carry out your everyday physical activities such as walking, climbing stairs, carrying groceries, or moving a chair?
<b>Supporting Definition:</b>	N/A
<b>Inclusion Criteria:</b>	If "1 = PROMIS-Global Health & PROMIS-29" to PROMCHOICE
<b>Timing:</b>	HD, PD & CC= Baseline and 6-monthly Pre-RRT & Tx = Baseline and annually
<b>Data Source:</b>	Patient-reported
<b>Type:</b>	Single answer
<b>Response Options:</b>	5 = Completely 4 = Mostly 3 = Moderately 2 = A little 1 = Not at all
<b>Variable ID:</b>	PROMIS-G_Qo8
<b>Variable:</b>	Global10 - Mood
<b>Definition:</b>	In the past 7 days, how often have you been bothered by emotional problems such as feeling anxious, depressed or irritable?
<b>Supporting Definition:</b>	N/A
<b>Inclusion Criteria:</b>	If "1 = PROMIS-Global Health & PROMIS-29" to PROMCHOICE
<b>Timing:</b>	HD, PD & CC= Baseline and 6-monthly Pre-RRT & Tx = Baseline and annually
<b>Data Source:</b>	Patient-reported
<b>Type:</b>	Single answer
<b>Response Options:</b>	1 = Never 2 = Rarely 3 = Sometimes 4 = Often 5 = Always
<b>Variable ID:</b>	PROMIS-G_Qo9
<b>Variable:</b>	Globalo8 - Fatigue
<b>Definition:</b>	In the past 7 days, how would you rate your fatigue on average?
<b>Supporting Definition:</b>	N/A
<b>Inclusion Criteria:</b>	If "1 = PROMIS-Global Health & PROMIS-29" to PROMCHOICE
<b>Timing:</b>	HD, PD & CC= Baseline and 6-monthly Pre-RRT & Tx = Baseline and annually
<b>Data Source:</b>	Patient-reported
<b>Type:</b>	Single answer
<b>Response Options:</b>	1 = None 2 = Mild 3 = Moderate 4 = Severe 5 = Very severe

<b>Variable ID:</b>	PROMIS-G_Q10
<b>Variable:</b>	Global07 - Pain and other unpleasant sensations
<b>Definition:</b>	In the past 7 days, how would you rate your pain on average?
<b>Supporting Definition:</b>	Indicate pain level on a scale of 1-10, where 0 = No pain, and 10 = Worst imaginable pain
<b>Inclusion Criteria:</b>	If "1 = PROMIS-Global Health & PROMIS-29" to PROMCHOICE
<b>Timing:</b>	HD, PD & CC= Baseline and 6-monthly Pre-RRT & Tx = Baseline and annually
<b>Data Source:</b>	Patient-reported
<b>Type:</b>	Single answer
<b>Response Options:</b>	Numerical value between 1 and 10
<b>Variable ID:</b>	RAND-36_Q01
<b>Variable:</b>	RAND-36_Q01
<b>Definition:</b>	In general, would you say your health is:
<b>Supporting Definition:</b>	N/A
<b>Inclusion Criteria:</b>	If "2 = RAND-36" to PROMCHOICE
<b>Timing:</b>	HD, PD & CC= Baseline and 6-monthly Pre-RRT & Tx = Baseline and annually
<b>Data Source:</b>	Patient-reported
<b>Type:</b>	Single answer
<b>Response Options:</b>	1 = Excellent 2 = Very good 3 = Good 4 = Fair 5 = Poor
<b>Variable ID:</b>	RAND-36_Q02
<b>Variable:</b>	RAND-36_Q02
<b>Definition:</b>	Compared to one year ago, how would you rate your health in general now?
<b>Supporting Definition:</b>	N/A
<b>Inclusion Criteria:</b>	If "2 = RAND-36" to PROMCHOICE
<b>Timing:</b>	HD, PD & CC= Baseline and 6-monthly Pre-RRT & Tx = Baseline and annually
<b>Data Source:</b>	Patient-reported
<b>Type:</b>	Single answer
<b>Response Options:</b>	1 = Much better now than one year ago 2 = Somewhat better now than one year ago 3 = About the same 4 = Somewhat worse now than one year ago 5 = Much worse now than one year ago
<b>Variable ID:</b>	RAND-36_Q03
<b>Variable:</b>	RAND-36_Q03
<b>Definition:</b>	The following items are about activities you might do during a typical day. Does your health now limit you in these activities? If so, how much?: Vigorous activities, such as running, lifting heavy objects, participating in strenuous sports
<b>Supporting Definition:</b>	N/A
<b>Inclusion Criteria:</b>	If "2 = RAND-36" to PROMCHOICE
<b>Timing:</b>	HD, PD & CC= Baseline and 6-monthly Pre-RRT & Tx = Baseline and annually
<b>Data Source:</b>	Patient-reported
<b>Type:</b>	Single answer
<b>Response Options:</b>	1 = Yes, limited a lot 2 = Yes, limited a little 3 = No, not limited at all
<b>Variable ID:</b>	RAND-36_Q04
<b>Variable:</b>	RAND-36_Q04

<b>Definition:</b>	The following items are about activities you might do during a typical day. Does your health now limit you in these activities? If so, how much?: Moderate activities, such as moving a table, pushing a vacuum cleaner, bowling, or playing golf
<b>Supporting Definition:</b>	N/A
<b>Inclusion Criteria:</b>	If "2 = RAND-36" to PROMCHOICE
<b>Timing:</b>	HD, PD & CC= Baseline and 6-monthly Pre-RRT & Tx = Baseline and annually
<b>Data Source:</b>	Patient-reported
<b>Type:</b>	Single answer
<b>Response Options:</b>	1 = Yes, limited a lot 2 = Yes, limited a little 3 = No, not limited at all
<b>Variable ID:</b>	RAND-36_Qo5
<b>Variable:</b>	RAND-36_Qo5
<b>Definition:</b>	The following items are about activities you might do during a typical day. Does your health now limit you in these activities? If so, how much?:
<b>Supporting Definition:</b>	N/A
<b>Inclusion Criteria:</b>	If "2 = RAND-36" to PROMCHOICE
<b>Timing:</b>	HD, PD & CC= Baseline and 6-monthly Pre-RRT & Tx = Baseline and annually
<b>Data Source:</b>	Patient-reported
<b>Type:</b>	Single answer
<b>Response Options:</b>	1 = Yes, limited a lot 2 = Yes, limited a little 3 = No, not limited at all
<b>Variable ID:</b>	RAND-36_Qo6
<b>Variable:</b>	RAND-36_Qo6
<b>Definition:</b>	The following items are about activities you might do during a typical day. Does your health now limit you in these activities? If so, how much?: Climbing several flights of stairs
<b>Supporting Definition:</b>	N/A
<b>Inclusion Criteria:</b>	If "2 = RAND-36" to PROMCHOICE
<b>Timing:</b>	HD, PD & CC= Baseline and 6-monthly Pre-RRT & Tx = Baseline and annually
<b>Data Source:</b>	Patient-reported
<b>Type:</b>	Single answer
<b>Response Options:</b>	1 = Yes, limited a lot 2 = Yes, limited a little 3 = No, not limited at all
<b>Variable ID:</b>	RAND-36_Qo7
<b>Variable:</b>	RAND-36_Qo7
<b>Definition:</b>	The following items are about activities you might do during a typical day. Does your health now limit you in these activities? If so, how much?: Climbing one flight of stairs
<b>Supporting Definition:</b>	N/A
<b>Inclusion Criteria:</b>	If "2 = RAND-36" to PROMCHOICE
<b>Timing:</b>	HD, PD & CC= Baseline and 6-monthly Pre-RRT & Tx = Baseline and annually
<b>Data Source:</b>	Patient-reported
<b>Type:</b>	Single answer
<b>Response Options:</b>	1 = Yes, limited a lot 2 = Yes, limited a little 3 = No, not limited at all
<b>Variable ID:</b>	RAND-36_Qo8
<b>Variable:</b>	RAND-36_Qo8

**Definition:** The following items are about activities you might do during a typical day. Does your health now limit you in these activities? If so, how much?:  
Bending, kneeling, or stooping

**Supporting Definition:** N/A

**Inclusion Criteria:** If "2 = RAND-36" to PROMCHOICE

**Timing:** HD, PD & CC= Baseline and 6-monthly  
Pre-RRT & Tx = Baseline and annually

**Data Source:** Patient-reported

**Type:** Single answer

**Response Options:** 1 = Yes, limited a lot  
2 = Yes, limited a little  
3 = No, not limited at all

**Variable ID:** RAND-36\_Q09

**Variable:** RAND-36\_Q09

**Definition:** The following items are about activities you might do during a typical day. Does your health now limit you in these activities? If so, how much?:  
Walking more than a mile

**Supporting Definition:** N/A

**Inclusion Criteria:** If "2 = RAND-36" to PROMCHOICE

**Timing:** HD, PD & CC= Baseline and 6-monthly  
Pre-RRT & Tx = Baseline and annually

**Data Source:** Patient-reported

**Type:** Single answer

**Response Options:** 1 = Yes, limited a lot  
2 = Yes, limited a little  
3 = No, not limited at all

**Variable ID:** RAND-36\_Q10

**Variable:** RAND-36\_Q10

**Definition:** The following items are about activities you might do during a typical day. Does your health now limit you in these activities? If so, how much?:  
Walking several blocks

**Supporting Definition:** N/A

**Inclusion Criteria:** If "2 = RAND-36" to PROMCHOICE

**Timing:** HD, PD & CC= Baseline and 6-monthly  
Pre-RRT & Tx = Baseline and annually

**Data Source:** Patient-reported

**Type:** Single answer

**Response Options:** 1 = Yes, limited a lot  
2 = Yes, limited a little  
3 = No, not limited at all

**Variable ID:** RAND-36\_Q11

**Variable:** RAND-36\_Q11

**Definition:** The following items are about activities you might do during a typical day. Does your health now limit you in these activities? If so, how much?:  
Walking one block

**Supporting Definition:** N/A

**Inclusion Criteria:** If "2 = RAND-36" to PROMCHOICE

**Timing:** HD, PD & CC= Baseline and 6-monthly  
Pre-RRT & Tx = Baseline and annually

**Data Source:** Patient-reported

**Type:** Single answer

**Response Options:** 1 = Yes, limited a lot  
2 = Yes, limited a little  
3 = No, not limited at all

**Variable ID:** RAND-36\_Q12

**Variable:** RAND-36\_Q12



<b>Definition:</b>	The following items are about activities you might do during a typical day. Does your health now limit you in these activities? If so, how much?: Bathing or dressing yourself
<b>Supporting Definition:</b>	N/A
<b>Inclusion Criteria:</b>	If "2 = RAND-36" to PROMCHOICE
<b>Timing:</b>	HD, PD & CC= Baseline and 6-monthly Pre-RRT & Tx = Baseline and annually
<b>Data Source:</b>	Patient-reported
<b>Type:</b>	Single answer
<b>Response Options:</b>	1 = Yes, limited a lot 2 = Yes, limited a little 3 = No, not limited at all
<b>Variable ID:</b>	RAND-36_Q13
<b>Variable:</b>	RAND-36_Q13
<b>Definition:</b>	During the past 4 weeks, have you had any of the following problems with your work or other regular daily activities as a result of your physical health?: Cut down the amount of time you spent on work or other activities
<b>Supporting Definition:</b>	N/A
<b>Inclusion Criteria:</b>	If "2 = RAND-36" to PROMCHOICE
<b>Timing:</b>	HD, PD & CC= Baseline and 6-monthly Pre-RRT & Tx = Baseline and annually
<b>Data Source:</b>	Patient-reported
<b>Type:</b>	Single answer
<b>Response Options:</b>	1 = Yes 2 = No
<b>Variable ID:</b>	RAND-36_Q14
<b>Variable:</b>	RAND-36_Q14
<b>Definition:</b>	During the past 4 weeks, have you had any of the following problems with your work or other regular daily activities as a result of your physical health?: Accomplished less than you would like
<b>Supporting Definition:</b>	N/A
<b>Inclusion Criteria:</b>	If "2 = RAND-36" to PROMCHOICE
<b>Timing:</b>	HD, PD & CC= Baseline and 6-monthly Pre-RRT & Tx = Baseline and annually
<b>Data Source:</b>	Patient-reported
<b>Type:</b>	Single answer
<b>Response Options:</b>	1 = Yes 2 = No
<b>Variable ID:</b>	RAND-36_Q15
<b>Variable:</b>	RAND-36_Q15
<b>Definition:</b>	During the past 4 weeks, have you had any of the following problems with your work or other regular daily activities as a result of your physical health?: Were limited in the kind of work or other activities
<b>Supporting Definition:</b>	N/A
<b>Inclusion Criteria:</b>	If "2 = RAND-36" to PROMCHOICE
<b>Timing:</b>	HD, PD & CC= Baseline and 6-monthly Pre-RRT & Tx = Baseline and annually
<b>Data Source:</b>	Patient-reported
<b>Type:</b>	Single answer
<b>Response Options:</b>	1 = Yes 2 = No
<b>Variable ID:</b>	RAND-36_Q16
<b>Variable:</b>	RAND-36_Q16
<b>Definition:</b>	During the past 4 weeks, have you had any of the following problems with your work or other regular daily activities as a result of your physical health?: Had difficulty performing the work or other activities (for example, it took extra

<b>Supporting Definition:</b>	effort)
<b>Inclusion Criteria:</b>	N/A
<b>Timing:</b>	If "2 = RAND-36" to PROMCHOICE HD, PD & CC= Baseline and 6-monthly Pre-RRT & Tx = Baseline and annually
<b>Data Source:</b>	Patient-reported
<b>Type:</b>	Single answer
<b>Response Options:</b>	1 = Yes 2 = No
<b>Variable ID:</b>	RAND-36_Q17
<b>Variable:</b>	RAND-36_Q17
<b>Definition:</b>	During the past 4 weeks, have you had any of the following problems with your work or other regular daily activities as a result of any emotional problems (such as feeling depressed or anxious)?: Cut down the amount of time you spent on work or other activities
<b>Supporting Definition:</b>	N/A
<b>Inclusion Criteria:</b>	If "2 = RAND-36" to PROMCHOICE
<b>Timing:</b>	HD, PD & CC= Baseline and 6-monthly Pre-RRT & Tx = Baseline and annually
<b>Data Source:</b>	Patient-reported
<b>Type:</b>	Single answer
<b>Response Options:</b>	1 = Yes 2 = No
<b>Variable ID:</b>	RAND-36_Q18
<b>Variable:</b>	RAND-36_Q18
<b>Definition:</b>	During the past 4 weeks, have you had any of the following problems with your work or other regular daily activities as a result of any emotional problems (such as feeling depressed or anxious)?: Accomplished less than you would like
<b>Supporting Definition:</b>	N/A
<b>Inclusion Criteria:</b>	If "2 = RAND-36" to PROMCHOICE
<b>Timing:</b>	HD, PD & CC= Baseline and 6-monthly Pre-RRT & Tx = Baseline and annually
<b>Data Source:</b>	Patient-reported
<b>Type:</b>	Single answer
<b>Response Options:</b>	1 = Yes 2 = No
<b>Variable ID:</b>	RAND-36_Q19
<b>Variable:</b>	RAND-36_Q19
<b>Definition:</b>	During the past 4 weeks, have you had any of the following problems with your work or other regular daily activities as a result of any emotional problems (such as feeling depressed or anxious)?: Didn't do work or other activities as carefully as usual
<b>Supporting Definition:</b>	N/A
<b>Inclusion Criteria:</b>	If "2 = RAND-36" to PROMCHOICE
<b>Timing:</b>	HD, PD & CC= Baseline and 6-monthly Pre-RRT & Tx = Baseline and annually
<b>Data Source:</b>	Patient-reported
<b>Type:</b>	Single answer
<b>Response Options:</b>	1 = Yes 2 = No
<b>Variable ID:</b>	RAND-36_Q20
<b>Variable:</b>	RAND-36_Q20
<b>Definition:</b>	During the past 4 weeks, to what extent has your physical health or emotional problems interfered with your normal social activities with family, friends, neighbors, or groups?

<b>Supporting Definition:</b>	N/A
<b>Inclusion Criteria:</b>	If "2 = RAND-36" to PROMCHOICE
<b>Timing:</b>	HD, PD & CC= Baseline and 6-monthly Pre-RRT & Tx = Baseline and annually
<b>Data Source:</b>	Patient-reported
<b>Type:</b>	Single answer
<b>Response Options:</b>	1 = Not at all 2 = A little bit 3 = Moderately 4 = Quite a bit 5 = Extremely
<b>Variable ID:</b>	RAND-36_Q21
<b>Variable:</b>	RAND-36_Q21
<b>Definition:</b>	How much bodily pain have you had during the past 4 weeks?
<b>Supporting Definition:</b>	N/A
<b>Inclusion Criteria:</b>	If "2 = RAND-36" to PROMCHOICE
<b>Timing:</b>	HD, PD & CC= Baseline and 6-monthly Pre-RRT & Tx = Baseline and annually
<b>Data Source:</b>	Patient-reported
<b>Type:</b>	Single answer
<b>Response Options:</b>	1 = None 2 = Very mild 3 = Mild 4 = Moderate 5 = Severe 6 = Very severe
<b>Variable ID:</b>	RAND-36_Q22
<b>Variable:</b>	RAND-36_Q22
<b>Definition:</b>	During the past 4 weeks, how much did pain interfere with your normal work (including both work outside the home and housework)?
<b>Supporting Definition:</b>	N/A
<b>Inclusion Criteria:</b>	If "2 = RAND-36" to PROMCHOICE
<b>Timing:</b>	HD, PD & CC= Baseline and 6-monthly Pre-RRT & Tx = Baseline and annually
<b>Data Source:</b>	Patient-reported
<b>Type:</b>	Single answer
<b>Response Options:</b>	1 = Not at all 2 = A little bit 3 = Moderately 4 = Quite a bit 5 = Extremely
<b>Variable ID:</b>	RAND-36_Q23
<b>Variable:</b>	RAND-36_Q23
<b>Definition:</b>	These questions are about how you feel and how things have been with you during the past 4 weeks. For each question, please give the one answer that comes closest to the way you have been feeling. How much of the time during the past 4 weeks... Did you feel full of pep?
<b>Supporting Definition:</b>	N/A
<b>Inclusion Criteria:</b>	If "2 = RAND-36" to PROMCHOICE
<b>Timing:</b>	HD, PD & CC= Baseline and 6-monthly Pre-RRT & Tx = Baseline and annually
<b>Data Source:</b>	Patient-reported
<b>Type:</b>	Single answer
<b>Response Options:</b>	1 = All of the time 2 = Most of the time

	3 = A good bit of the time 4 = Some of the time 5 = A little of the time 6 = None of the time
<b>Variable ID:</b>	RAND-36_Q24
<b>Variable:</b>	RAND-36_Q24
<b>Definition:</b>	These questions are about how you feel and how things have been with you during the past 4 weeks. For each question, please give the one answer that comes closest to the way you have been feeling. How much of the time during the past 4 weeks... Have you been a very nervous person?
<b>Supporting Definition:</b>	N/A
<b>Inclusion Criteria:</b>	If "2 = RAND-36" to PROMCHOICE
<b>Timing:</b>	HD, PD & CC= Baseline and 6-monthly Pre-RRT & Tx = Baseline and annually
<b>Data Source:</b>	Patient-reported
<b>Type:</b>	Single answer
<b>Response Options:</b>	1 = All of the time 2 = Most of the time 3 = A good bit of the time 4 = Some of the time 5 = A little of the time 6 = None of the time
<b>Variable ID:</b>	RAND-36_Q25
<b>Variable:</b>	RAND-36_Q25
<b>Definition:</b>	These questions are about how you feel and how things have been with you during the past 4 weeks. For each question, please give the one answer that comes closest to the way you have been feeling. How much of the time during the past 4 weeks... Have you felt so down in the dumps that nothing could cheer you up?
<b>Supporting Definition:</b>	N/A
<b>Inclusion Criteria:</b>	If "2 = RAND-36" to PROMCHOICE
<b>Timing:</b>	HD, PD & CC= Baseline and 6-monthly Pre-RRT & Tx = Baseline and annually
<b>Data Source:</b>	Patient-reported
<b>Type:</b>	Single answer
<b>Response Options:</b>	1 = All of the time 2 = Most of the time 3 = A good bit of the time 4 = Some of the time 5 = A little of the time 6 = None of the time
<b>Variable ID:</b>	RAND-36_Q26
<b>Variable:</b>	RAND-36_Q26
<b>Definition:</b>	These questions are about how you feel and how things have been with you during the past 4 weeks. For each question, please give the one answer that comes closest to the way you have been feeling. How much of the time during the past 4 weeks... Have you felt calm and peaceful?
<b>Supporting Definition:</b>	N/A
<b>Inclusion Criteria:</b>	If "2 = RAND-36" to PROMCHOICE
<b>Timing:</b>	HD, PD & CC= Baseline and 6-monthly Pre-RRT & Tx = Baseline and annually
<b>Data Source:</b>	Patient-reported
<b>Type:</b>	Single answer
<b>Response Options:</b>	1 = All of the time

	<p>2 = Most of the time</p> <p>3 = A good bit of the time</p> <p>4 = Some of the time</p> <p>5 = A little of the time</p> <p>6 = None of the time</p>
<b>Variable ID:</b>	RAND-36_Q27
<b>Variable:</b>	RAND-36_Q27
<b>Definition:</b>	<p>These questions are about how you feel and how things have been with you during the past 4 weeks. For each question, please give the one answer that comes closest to the way you have been feeling.</p> <p>How much of the time during the past 4 weeks...</p> <p>Did you have a lot of energy?</p>
<b>Supporting Definition:</b>	N/A
<b>Inclusion Criteria:</b>	If "2 = RAND-36" to PROMCHOICE
<b>Timing:</b>	HD, PD & CC= Baseline and 6-monthly Pre-RRT & Tx = Baseline and annually
<b>Data Source:</b>	Patient-reported
<b>Type:</b>	Single answer
<b>Response Options:</b>	<p>1 = All of the time</p> <p>2 = Most of the time</p> <p>3 = A good bit of the time</p> <p>4 = Some of the time</p> <p>5 = A little of the time</p> <p>6 = None of the time</p>
<b>Variable ID:</b>	RAND-36_Q28
<b>Variable:</b>	RAND-36_Q28
<b>Definition:</b>	<p>These questions are about how you feel and how things have been with you during the past 4 weeks. For each question, please give the one answer that comes closest to the way you have been feeling.</p> <p>How much of the time during the past 4 weeks...</p> <p>Have you felt downhearted and blue?</p>
<b>Supporting Definition:</b>	N/A
<b>Inclusion Criteria:</b>	If "2 = RAND-36" to PROMCHOICE
<b>Timing:</b>	HD, PD & CC= Baseline and 6-monthly Pre-RRT & Tx = Baseline and annually
<b>Data Source:</b>	Patient-reported
<b>Type:</b>	Single answer
<b>Response Options:</b>	<p>1 = All of the time</p> <p>2 = Most of the time</p> <p>3 = A good bit of the time</p> <p>4 = Some of the time</p> <p>5 = A little of the time</p> <p>6 = None of the time</p>
<b>Variable ID:</b>	RAND-36_Q29
<b>Variable:</b>	RAND-36_Q29
<b>Definition:</b>	<p>These questions are about how you feel and how things have been with you during the past 4 weeks. For each question, please give the one answer that comes closest to the way you have been feeling.</p> <p>How much of the time during the past 4 weeks...</p> <p>Did you feel worn out?</p>
<b>Supporting Definition:</b>	N/A
<b>Inclusion Criteria:</b>	If "2 = RAND-36" to PROMCHOICE
<b>Timing:</b>	HD, PD & CC= Baseline and 6-monthly Pre-RRT & Tx = Baseline and annually
<b>Data Source:</b>	Patient-reported
<b>Type:</b>	Single answer

<b>Response Options:</b>	1 = All of the time 2 = Most of the time 3 = A good bit of the time 4 = Some of the time 5 = A little of the time 6 = None of the time
<b>Variable ID:</b>	RAND-36_Q30
<b>Variable:</b>	RAND-36_Q30
<b>Definition:</b>	These questions are about how you feel and how things have been with you during the past 4 weeks. For each question, please give the one answer that comes closest to the way you have been feeling. How much of the time during the past 4 weeks... Have you been a happy person?
<b>Supporting Definition:</b>	N/A
<b>Inclusion Criteria:</b>	If "2 = RAND-36" to PROMCHOICE
<b>Timing:</b>	HD, PD & CC= Baseline and 6-monthly Pre-RRT & Tx = Baseline and annually
<b>Data Source:</b>	Patient-reported
<b>Type:</b>	Single answer
<b>Response Options:</b>	1 = All of the time 2 = Most of the time 3 = A good bit of the time 4 = Some of the time 5 = A little of the time 6 = None of the time
<b>Variable ID:</b>	RAND-36_Q31
<b>Variable:</b>	RAND-36_Q31
<b>Definition:</b>	These questions are about how you feel and how things have been with you during the past 4 weeks. For each question, please give the one answer that comes closest to the way you have been feeling. How much of the time during the past 4 weeks... Did you feel tired?
<b>Supporting Definition:</b>	N/A
<b>Inclusion Criteria:</b>	If "2 = RAND-36" to PROMCHOICE
<b>Timing:</b>	HD, PD & CC= Baseline and 6-monthly Pre-RRT & Tx = Baseline and annually
<b>Data Source:</b>	Patient-reported
<b>Type:</b>	Single answer
<b>Response Options:</b>	1 = All of the time 2 = Most of the time 3 = A good bit of the time 4 = Some of the time 5 = A little of the time 6 = None of the time
<b>Variable ID:</b>	RAND-36_Q32
<b>Variable:</b>	RAND-36_Q32
<b>Definition:</b>	During the past 4 weeks, how much of the time has your physical health or emotional problems interfered with your social activities (like visiting with friends, relatives, etc.)?
<b>Supporting Definition:</b>	N/A
<b>Inclusion Criteria:</b>	If "2 = RAND-36" to PROMCHOICE
<b>Timing:</b>	HD, PD & CC= Baseline and 6-monthly Pre-RRT & Tx = Baseline and annually
<b>Data Source:</b>	Patient-reported
<b>Type:</b>	Single answer
<b>Response Options:</b>	1 = All of the time

2 = Most of the time  
 3 = Some of the time  
 4 = A little of the time  
 5 = None of the time

**Variable ID:** RAND-36\_Q33

**Variable:** RAND-36\_Q33

**Definition:** How TRUE or FALSE is each of the following statements for you.  
 I seem to get sick a little easier than other people

**Supporting Definition:** N/A

**Inclusion Criteria:** If "2 = RAND-36" to PROMCHOICE

**Timing:** HD, PD & CC= Baseline and 6-monthly  
 Pre-RRT & Tx = Baseline and annually

**Data Source:** Patient-reported

**Type:** Single answer

**Response Options:** 1 = Definitely true

2 = Mostly true

3 = Don't know

4 = Mostly false

5 = Definitely false

**Variable ID:** RAND-36\_Q34

**Variable:** RAND-36\_Q34

**Definition:** How TRUE or FALSE is each of the following statements for you.  
 I am as healthy as anybody I know

**Supporting Definition:** N/A

**Inclusion Criteria:** If "2 = RAND-36" to PROMCHOICE

**Timing:** HD, PD & CC= Baseline and 6-monthly  
 Pre-RRT & Tx = Baseline and annually

**Data Source:** Patient-reported

**Type:** Single answer

**Response Options:** 1 = Definitely true

2 = Mostly true

3 = Don't know

4 = Mostly false

5 = Definitely false

**Variable ID:** RAND-36\_Q35

**Variable:** RAND-36\_Q35

**Definition:** How TRUE or FALSE is each of the following statements for you.  
 I expect my health to get worse

**Supporting Definition:** N/A

**Inclusion Criteria:** If "2 = RAND-36" to PROMCHOICE

**Timing:** HD, PD & CC= Baseline and 6-monthly  
 Pre-RRT & Tx = Baseline and annually

**Data Source:** Patient-reported

**Type:** Single answer

**Response Options:** 1 = Definitely true

2 = Mostly true

3 = Don't know

4 = Mostly false

5 = Definitely false

**Variable ID:** RAND-36\_Q36

**Variable:** RAND-36\_Q36

**Definition:** How TRUE or FALSE is each of the following statements for you.  
 My health is excellent

**Supporting Definition:** N/A

**Inclusion Criteria:** If "2 = RAND-36" to PROMCHOICE

**Timing:** HD, PD & CC= Baseline and 6-monthly

**Data Source:** Pre-RRT & Tx = Baseline and annually  
**Type:** Patient-reported  
**Response Options:** Single answer  
 1 = Definitely true  
 2 = Mostly true  
 3 = Don't know  
 4 = Mostly false  
 5 = Definitely false

## Treatment-Specific

**Variable ID:** RFUNC  
**Variable:** Renal/Kidney Allograft Function  
**Definition:** Indicate how renal/kidney allograft function was measured  
**Supporting Definition:** Serum creatinine and/or eGFR by CKD-EPI serum creatinine (preferred) or alternative equation  
**Inclusion Criteria:** Pre-RRT, CC, Tx  
**Timing:** 6-monthly  
**Data Source:** Administrative data  
**Type:** Single answer  
**Response Options:** 0 = No measurement taken  
 1 = CKD-EPI Serum Creatinine  
 2 = eGFR  
 3 = Serum Creatinine + eGFR  
 999 = Unknown

**Variable ID:** RFUNCSCUNIT  
**Variable:** Serum Creatinine unit  
**Definition:** Indicate the units used for serum creatinine measurement  
**Supporting Definition:** N/A  
**Inclusion Criteria:** If "1 = Serum Creatinine" or "3 = Serum Creatinine + eGFR" to RFUNC  
**Timing:** 6-monthly  
**Data Source:** Administrative data  
**Type:** Single answer  
**Response Options:** 1 = umol/l  
 2 = mg/dl

**Variable ID:** RFUNCSC  
**Variable:** Serum Creatinine  
**Definition:** Provide the serum creatinine value  
**Supporting Definition:** N/A  
**Inclusion Criteria:** If "1 = Serum Creatinine" or "3 = Serum Creatinine + eGFR" to RFUNC  
**Timing:** 6-monthly  
**Data Source:** Administrative data  
**Type:** Numerical  
**Response Options:** N/A

**Variable ID:** RFUNCEGFRMEAS  
**Variable:** eGFR equation  
**Definition:** Provide the eGFR equation  
**Supporting Definition:** N/A  
**Inclusion Criteria:** If "2 = eGFR" or "3 = Serum Creatinine + eGFR" to RFUNC  
**Timing:** 6-monthly  
**Data Source:** Administrative data  
**Type:** Single answer  
**Response Options:** 1 = CKD-EPI Serum Creatinine  
 2 = MDRD-4  
 3 = MDRD-6  
 4 = Cockcroft-Gault  
 5 = Other



<b>Variable ID:</b>	RFUNCEGFR
<b>Variable:</b>	eGFR value
<b>Definition:</b>	Provide the eGFR value
<b>Supporting Definition:</b>	N/A
<b>Inclusion Criteria:</b>	If "2 = eGFR" or "3 = Serum Creatinine + eGFR" to RFUNC
<b>Timing:</b>	6-monthly
<b>Data Source:</b>	Administrative data
<b>Type:</b>	Numerical
<b>Response Options:</b>	N/A
<b>Variable ID:</b>	RFUNCDATE
<b>Variable:</b>	Renal function measurement date
<b>Definition:</b>	Provide the date of renal function measurement
<b>Supporting Definition:</b>	N/A
<b>Inclusion Criteria:</b>	If "1 = Serum Creatinine", "2 = eGFR" or "3 = Serum Creatinine + eGFR" to RFUNC
<b>Timing:</b>	6-monthly
<b>Data Source:</b>	Administrative data
<b>Type:</b>	Date by DD/MM/YYYY
<b>Response Options:</b>	DD/MM/YYYY
<b>Variable ID:</b>	ALB
<b>Variable:</b>	Albuminuria
<b>Definition:</b>	Indicate whether albuminuria was measured
<b>Supporting Definition:</b>	Urine albumin/creatinine ratio in spot urine (preferred), or urine protein/creatinine ratio (alternative)
<b>Inclusion Criteria:</b>	Pre-RRT, CC, Tx
<b>Timing:</b>	Annually
<b>Data Source:</b>	Administrative data
<b>Type:</b>	Single answer
<b>Response Options:</b>	0 = No 1 = Urine albumin/creatinine ratio in spot urine 2 = Urine protein/creatinine ratio in spot urine 999 = Unknown
<b>Variable ID:</b>	ALBUNIT
<b>Variable:</b>	Units of albuminuria measurement
<b>Definition:</b>	Indicate the units used for albuminuria measurement
<b>Supporting Definition:</b>	N/A
<b>Inclusion Criteria:</b>	If "1 = Urine albumin/creatinine ratio in spot urine" or "2 = Urine protein/creatinine ratio in spot urine" to ALB
<b>Timing:</b>	Annually
<b>Data Source:</b>	Administrative data
<b>Type:</b>	Single answer
<b>Response Options:</b>	1 = mg/g 2 = mg/mmol
<b>Variable ID:</b>	ALBMEASURE1
<b>Variable:</b>	Urine ACR
<b>Definition:</b>	Provide urine ACR in spot urine(mg/g, mg/mmol)
<b>Supporting Definition:</b>	N/A
<b>Inclusion Criteria:</b>	If "1 = Urine albumin/creatinine ratio in spot urine" to ALB
<b>Timing:</b>	Annually
<b>Data Source:</b>	Administrative data
<b>Type:</b>	Numerical
<b>Response Options:</b>	Numerical value
<b>Variable ID:</b>	ALBMEASURE2
<b>Variable:</b>	Urine PCR
<b>Definition:</b>	Provide urine PCR in spot urine(mg/g, mg/mmol)
<b>Supporting Definition:</b>	N/A
<b>Inclusion Criteria:</b>	If "2 = Urine protein/creatinine ratio in spot urine" to ALB

<b>Timing:</b>	Annually
<b>Data Source:</b>	Administrative data
<b>Type:</b>	Numerical
<b>Response Options:</b>	Numerical value
<b>Variable ID:</b>	ALBDATE
<b>Variable:</b>	Albuminuria measurement
<b>Definition:</b>	Provide the date of albuminuria measurement
<b>Supporting Definition:</b>	N/A
<b>Inclusion Criteria:</b>	If "1 = yes" to ALB
<b>Timing:</b>	Annually
<b>Data Source:</b>	Administrative data
<b>Type:</b>	Date by DD/MM/YYYY
<b>Response Options:</b>	DD/MM/YYYY
<b>Variable ID:</b>	BACTER
<b>Variable:</b>	Bacteraemia
<b>Definition:</b>	Indicate if the patient was diagnosed with bacteraemia
<b>Supporting Definition:</b>	Positive blood culture with clinical signs and symptoms
<b>Inclusion Criteria:</b>	HD, PD, Tx
<b>Timing:</b>	6-monthly
<b>Data Source:</b>	Clinical
<b>Type:</b>	Single answer
<b>Response Options:</b>	0 = No 1 = Yes 999 = Unknown
<b>Variable ID:</b>	BACTEREP
<b>Variable:</b>	Number of diagnosed bacteraemia episodes
<b>Definition:</b>	Indicate how many episodes of bacteraemia the patient was diagnosed with
<b>Supporting Definition:</b>	N/A
<b>Inclusion Criteria:</b>	If "1 = yes" to BACTER
<b>Timing:</b>	6-monthly
<b>Data Source:</b>	Clinical
<b>Type:</b>	Numerical
<b>Response Options:</b>	Numerical value
<b>Variable ID:</b>	HDSTART
<b>Variable:</b>	Haemodialysis start
<b>Definition:</b>	Indicate when haemodialysis was started
<b>Supporting Definition:</b>	N/A
<b>Inclusion Criteria:</b>	HD
<b>Timing:</b>	Baseline
<b>Data Source:</b>	Administrative or clinical
<b>Type:</b>	Date by DD/MM/YYYY
<b>Response Options:</b>	DD/MM/YYYY
<b>Variable ID:</b>	HDTYPE
<b>Variable:</b>	Vascular access type
<b>Definition:</b>	Indicate the type of the most recent vascular access
<b>Supporting Definition:</b>	N/A
<b>Inclusion Criteria:</b>	HD
<b>Timing:</b>	Annually
<b>Data Source:</b>	Administrative or clinical
<b>Type:</b>	Single answer
<b>Response Options:</b>	1 = AV graft 2 = AV fistula 3 = Catheter
<b>Variable ID:</b>	HDNEW
<b>Variable:</b>	Subsequent vascular access
<b>Definition:</b>	Indicate whether a subsequent vascular access had to be created

<b>Supporting Definition:</b>	N/A
<b>Inclusion Criteria:</b>	HD
<b>Timing:</b>	6-monthly
<b>Data Source:</b>	Administrative or clinical
<b>Type:</b>	Single answer
<b>Response Options:</b>	0 = No 1 = Yes 999 = Unknown
<b>Variable ID:</b>	HDNEWDATE
<b>Variable:</b>	Subsequent vascular access date
<b>Definition:</b>	Provide the date of starting haemodialysis using the subsequent vascular access
<b>Supporting Definition:</b>	Multiple dates possible
<b>Inclusion Criteria:</b>	If "1 = yes" to HDNEW
<b>Timing:</b>	6-monthly
<b>Data Source:</b>	Administrative or clinical
<b>Type:</b>	Date by DD/MM/YYYY
<b>Response Options:</b>	DD/MM/YYYY
<b>Variable ID:</b>	HDNEWTTYPE
<b>Variable:</b>	New vascular access type
<b>Definition:</b>	Indicate the type of new vascular access
<b>Supporting Definition:</b>	N/A
<b>Inclusion Criteria:</b>	If "1 = yes" to HDNEW
<b>Timing:</b>	6-monthly
<b>Data Source:</b>	Administrative or clinical
<b>Type:</b>	Single answer
<b>Response Options:</b>	1 = AV graft 2 = AV fistula 3 = Catheter
<b>Variable ID:</b>	PDSTART
<b>Variable:</b>	Peritoneal dialysis start
<b>Definition:</b>	Indicate when peritoneal dialysis was started
<b>Supporting Definition:</b>	First fluid exchange with intention of causing solute or fluid clearance
<b>Inclusion Criteria:</b>	PD
<b>Timing:</b>	Baseline
<b>Data Source:</b>	Administrative or clinical
<b>Type:</b>	Date by DD/MM/YYYY
<b>Response Options:</b>	DD/MM/YYYY
<b>Variable ID:</b>	PDSWITCH
<b>Variable:</b>	Treatment pathway change
<b>Definition:</b>	Indicate whether treatment was sustainably switched (to conservative care, haemodialysis or transplant)
<b>Supporting Definition:</b>	Sustained switch is defined as >30 days
<b>Inclusion Criteria:</b>	PD
<b>Timing:</b>	Ongoing
<b>Data Source:</b>	Administrative or clinical
<b>Type:</b>	Single answer
<b>Response Options:</b>	0 = No 1 = Yes 999 = Unknown
<b>Variable ID:</b>	PDSWITCHDATE
<b>Variable:</b>	Treatment pathway change date
<b>Definition:</b>	Provide the date of starting conservative, haemodialysis or transplant
<b>Supporting Definition:</b>	N/A
<b>Inclusion Criteria:</b>	If "1 = yes" to PDSWITCH
<b>Timing:</b>	Ongoing
<b>Data Source:</b>	Administrative or clinical

<b>Type:</b>	Date by DD/MM/YYYY
<b>Response Options:</b>	DD/MM/YYYY
<b>Variable ID:</b>	PERITON
<b>Variable:</b>	Peritonitis
<b>Definition:</b>	Indicate if the patient was diagnosed with peritonitis
<b>Supporting Definition:</b>	Clinically suspected and/or culture-proven peritonitis
<b>Inclusion Criteria:</b>	Episodes of peritonitis defined as clinical sings of peritoneal inflammation or peritoneal fluid leukocyte count of $> 0.1 \times 10^9/L$ with at least 50% polymorphonuclear neutrophilic cells or positive culture of peritoneal fluid
<b>Timing:</b>	PD
<b>Data Source:</b>	6-monthly
<b>Type:</b>	Clinical
<b>Response Options:</b>	Single answer
	0 = No
	1 = Yes
	999 = Unknown
<b>Variable ID:</b>	PERITONPROOF
<b>Variable:</b>	Peritonitis diagnosis
<b>Definition:</b>	Indicate whether peritonitis was clinically suspected and/or culture-proven
<b>Supporting Definition:</b>	N/A
<b>Inclusion Criteria:</b>	If "1 = yes" to PERITON
<b>Timing:</b>	6-monthly
<b>Data Source:</b>	Clinical
<b>Type:</b>	Single answer
<b>Response Options:</b>	1 = Clinically suspected
	2 = Culture proven
	3 = Clinically suspected and culture proven
<b>Variable ID:</b>	PERITONEP
<b>Variable:</b>	Number of peritonitis episodes diagnosed
<b>Definition:</b>	Indicate how many episodes of peritonitis the patient was diagnosed with
<b>Supporting Definition:</b>	N/A
<b>Inclusion Criteria:</b>	If "1 = yes" to PERITON
<b>Timing:</b>	6-monthly
<b>Data Source:</b>	Clinical
<b>Type:</b>	Numerical
<b>Response Options:</b>	Numerical value
<b>Variable ID:</b>	TRANSDATE
<b>Variable:</b>	Date of kidney transplant
<b>Definition:</b>	Provide the date of transplant surgery
<b>Supporting Definition:</b>	N/A
<b>Inclusion Criteria:</b>	Tx
<b>Timing:</b>	Annually
<b>Data Source:</b>	Administrative data
<b>Type:</b>	Date by DD/MM/YYYY
<b>Response Options:</b>	DD/MM/YYYY
<b>Variable ID:</b>	TRANSNEW
<b>Variable:</b>	Subsequent kidney transplant
<b>Definition:</b>	Indicate whether there has been a subsequent kidney transplant
<b>Supporting Definition:</b>	N/A
<b>Inclusion Criteria:</b>	Tx
<b>Timing:</b>	Annually
<b>Data Source:</b>	Administrative data
<b>Type:</b>	Single answer
<b>Response Options:</b>	0 = No
	1 = Yes

	999 = Unknown
<b>Variable ID:</b>	TRANSNEWTTYPE
<b>Variable:</b>	Type of new transplant
<b>Definition:</b>	Was the transplanted kidney from a living or deceased donor?
<b>Supporting Definition:</b>	N/A
<b>Inclusion Criteria:</b>	If "1 = yes" to TRANSNEW
<b>Timing:</b>	Annually
<b>Data Source:</b>	Administrative data
<b>Type:</b>	Single answer
<b>Response Options:</b>	1 = Living donor 2 = Deceased donor 999 = Unknown
<b>Variable ID:</b>	TRANSNEWDATE
<b>Variable:</b>	Date of subsequent kidney transplant
<b>Definition:</b>	Provide the date of a subsequent kidney transplant
<b>Supporting Definition:</b>	N/A
<b>Inclusion Criteria:</b>	If "1 = yes" to TRANSNEW
<b>Timing:</b>	Annually
<b>Data Source:</b>	Administrative data
<b>Type:</b>	Date by DD/MM/YYYY
<b>Response Options:</b>	DD/MM/YYYY
<b>Variable ID:</b>	TRANSREJ
<b>Variable:</b>	Kidney transplant rejection
<b>Definition:</b>	Indicate whether an episode of biopsy-proven and/or clinically-suspected acute rejection of the kidney transplant was diagnosed
<b>Supporting Definition:</b>	According to Banff classification. Category 2: acute/active antibody-mediated rejection, category 3, category 4: acute/active T-cell mediated rejection
<b>Inclusion Criteria:</b>	Tx
<b>Timing:</b>	6-monthly for the first year, then annually
<b>Data Source:</b>	Clinical
<b>Type:</b>	Single answer
<b>Response Options:</b>	0 = No 1 = Yes 999 = Unknown
<b>Variable ID:</b>	TRANSPROOF
<b>Variable:</b>	Transplant rejection diagnosis
<b>Definition:</b>	Indicate whether acute rejection was clinically suspected and/or biopsy-proven
<b>Supporting Definition:</b>	N/A
<b>Inclusion Criteria:</b>	If "1 = yes" to TRANSNEW
<b>Timing:</b>	6-monthly for the first year, then annually
<b>Data Source:</b>	Clinical
<b>Type:</b>	Single answer
<b>Response Options:</b>	1 = Clinically suspected 2 = Biopsy proven 3 = Clinically suspected and culture proven
<b>Variable ID:</b>	TRANSREJDATE
<b>Variable:</b>	Kidney transplant rejection date
<b>Definition:</b>	Provide the date of acute rejection diagnosis
<b>Supporting Definition:</b>	N/A
<b>Inclusion Criteria:</b>	If "1 = yes" to TRANSREJ
<b>Timing:</b>	6-monthly for the first year, then annually
<b>Data Source:</b>	Clinical
<b>Type:</b>	Date by DD/MM/YYYY
<b>Response Options:</b>	DD/MM/YYYY
<b>Variable ID:</b>	MALIG
<b>Variable:</b>	Malignancies

<b>Definition:</b>	Indicate whether the patient has any malignancies
<b>Supporting Definition:</b>	N/A
<b>Inclusion Criteria:</b>	Tx
<b>Timing:</b>	Annually
<b>Data Source:</b>	Administrative or clinical
<b>Type:</b>	Single answer
<b>Response Options:</b>	0 = No 1 = Yes 999 = Unknown
<b>Variable ID:</b>	MALIGTYPE1
<b>Variable:</b>	Malignancies type 1
<b>Definition:</b>	Indicate whether the malignancy is a solid tumour
<b>Supporting Definition:</b>	N/A
<b>Inclusion Criteria:</b>	If "1 = yes" to MALIG
<b>Timing:</b>	Annually
<b>Data Source:</b>	Administrative or clinical
<b>Type:</b>	Single answer
<b>Response Options:</b>	0 = No 1 = Yes 999 = Unknown
<b>Variable ID:</b>	MALIGTYPE2
<b>Variable:</b>	Malignancies type 2
<b>Definition:</b>	Indicate whether the malignancy is skin cancer
<b>Supporting Definition:</b>	N/A
<b>Inclusion Criteria:</b>	If "1 = yes" to MALIG
<b>Timing:</b>	Annually
<b>Data Source:</b>	Administrative or clinical
<b>Type:</b>	Single answer
<b>Response Options:</b>	0 = No 1 = Yes 999 = Unknown
<b>Variable ID:</b>	MALIGTYPE3
<b>Variable:</b>	Malignancies type 3
<b>Definition:</b>	Indicate whether the malignancy is a haematological malignancy
<b>Supporting Definition:</b>	N/A
<b>Inclusion Criteria:</b>	If "1 = yes" to MALIG
<b>Timing:</b>	Annually
<b>Data Source:</b>	Administrative or clinical
<b>Type:</b>	Single answer
<b>Response Options:</b>	0 = No 1 = Yes 999 = Unknown
<b>Variable ID:</b>	MALIGDATE
<b>Variable:</b>	Date of malignancy diagnosis
<b>Definition:</b>	Indicate the date of malignancy diagnosis
<b>Supporting Definition:</b>	N/A
<b>Inclusion Criteria:</b>	If "1 = yes" to MALIG
<b>Timing:</b>	Annually
<b>Data Source:</b>	Administrative or clinical
<b>Type:</b>	Date by DD/MM/YYYY
<b>Response Options:</b>	DD/MM/YYYY

# Working Group Member Conflicts of Interest

At the beginning of the Working Group process, we ask all Working Group members to declare any conflicts of interest they have. We then circulate these within the Group to ensure transparency.

Name		Title	Declarations
Willem Jan Bos	Nephrologist		Roche - research support
Wouter Verberne	Nephrology Resident		Roche - research support
Charlotte Roberts	Vice President of Standardisation		None declared
Zofia Das-Gupta	Project Leader		None declared
Andrea Stopper	Executive Vice-President		Fresenius Medical Care - salary
Andrew Allegretti	Instructor of Medicine		Translation Medicine Group - research support
Chih-Wei Yang	Professor of Nephrology		None declared
David Wheeler	Nephrologist		
Eduardo Parra Moncasi	Nephrologist		None declared
Elizabeth Gibbons	Senior Research Scientist		None declared
Guillermo Garcia-Garcia	Research Professor		Pisa Farmaceutica - personal fees
Hans Bart	Patient Representative/Director		Pharmaceutical companies - grants
Katherine Tuttle	Executive Director for Research Professor of Medicine Nephrologist		Eli Lilly and Company - consulting fees Boehringer Ingelheim - consulting fees
Kitty Jager	Professor of Medical Informatics & Kidney Epidemiology		None declared
Laurie Konowitz	Patient Representative		None declared
Marc Hemmelder	Nephrologist		None declared
Markus Ketteler	Professor of Medicine		None declared
Muhammed Al Rohani	Associate Professor of Internal Medicine		None declared
Türkan Terkivatan	Consultant Surgeon		None declared
Wim Van Biesen	Professor of Nephrology		None declared

## Reference Guide Revisions

Reference Guide Version	Location within Reference Guide	Content Change
-------------------------	---------------------------------	----------------



[www.ichom.org](http://www.ichom.org)