



**ICHOM**

**TOGETHER, WE CAN TRANSFORM  
HEALTH CARE GLOBALLY**

 [ichom.org](https://ichom.org)

# We are an independent non-profit with an ambitious vision

## Our mission

To unlock the potential of value-based healthcare by defining global Sets of Patient-Centered Outcome Measures that matter most to patients and driving adoption and reporting of these measures worldwide to create better value for all stakeholders

## THE CHALLENGE

- The lack of outcome measurements that represent what truly matters most to patients is a **national and global barrier to driving health care improvement**
- Value-based healthcare has been slower to catch on due to the **lack of standardized, interoperable, and transparent patient outcome data** in addition to **misaligned incentives** across system stakeholders
- Outcomes are **not patient-focused**, and there is a large focus nationally on **process improvement measures** as opposed to measures that are defined from the **patient perspective**, driving the assumption that changing processes improves outcomes for patients
- There is **limited outcomes** data beyond survival and basic mortality measures, and where available, outcomes are **difficult to compare** and are **not standardized**, resulting in slow progress towards value-based healthcare and inability for providers nationally to compare and **benchmark patient outcome data** against their peers
- The existing studies on **patient outcomes variation** have identified **5 times** variations in major obstetrical complications among U.S. hospitals and **2 times** variation in 30-day mortality rate from a heart attack in U.S. hospitals
- The **extensive variation** and infrequent use of standardized outcomes measures contribute to **health disparities and inequities** in the U.S

That's where we come in. ICHOM is uniquely positioned to enable health care system transformation.

ICHOM's critical work is facilitating the transformation of value-based healthcare globally and has the potential to unlock the \$2+ trillion in wasted healthcare spending globally. ICHOM's standardized outcome measures make benchmarking possible, which enables the continuous learning needed for value-based healthcare.

## HOW WE CHANGE HEALTHCARE FOR THE BETTER



Develop **fair and neutral** sets to measure outcomes that matter most to patients across the world's most prevalent health conditions



Increase the reporting of measured outcomes through the provision of **free standards**



Utilize our **global reach** to encourage the worldwide adoption of ICHOM's sets of Patient-Centered Outcome Measures



Support the global exchange of information and good practice using our **scientific network of 1000+ clinical thought leaders**

ICHOM has made significant progress towards value-based healthcare in the past 10 years

ICHOM's sets of Patient-Centered Outcome Measures are employed at hospitals in over **85 countries**

Initiated an **Implementation Support** program with consultant partners around the world

Developed **digitized and harmonized outcomes measures** to ease implementation and data collection

Developed **40 sets of Patient-Centered Outcome Measures**, with 5 more in progress and 35 have been published in peer-reviewed journals

Launched ICHOM's Global Benchmarking Platform that enables high quality and automated data analytics, evidence generation, and best practice sharing globally

Operates the **largest value-based healthcare conference in the world**, convening pioneers and leaders in value-based healthcare, with 9 Branded value-based healthcare Conferences since 2012

Launched **ICHOM Connect**, an online platform designed to bring the value-based healthcare community together to network, share ideas, and discuss the implementation of ICHOM Sets of Patient-Centered Outcome Measures

# ICHOM's Sets of Patient-Centered Outcome Measures - the Fundamental ICHOM Product

## ICHOM'S PREGNANCY AND CHILDBIRTH SET OF PATIENT-CENTERED OUTCOME MEASURES



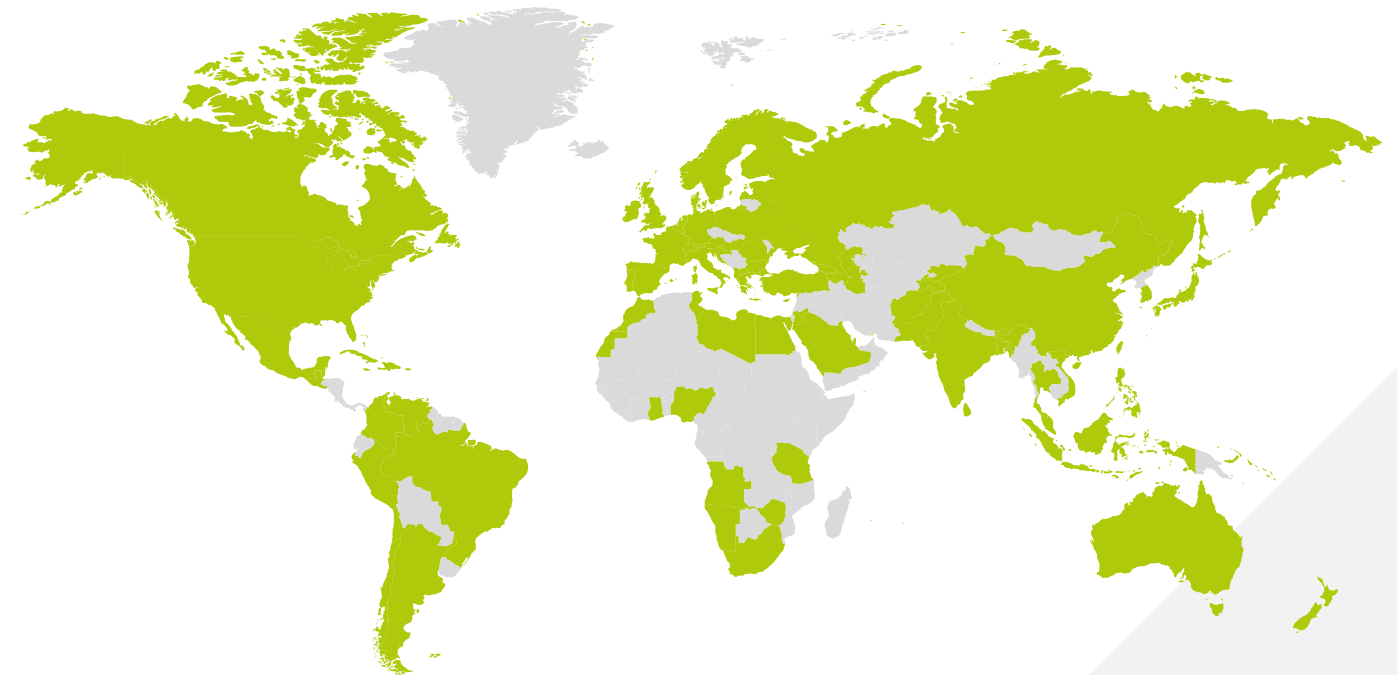
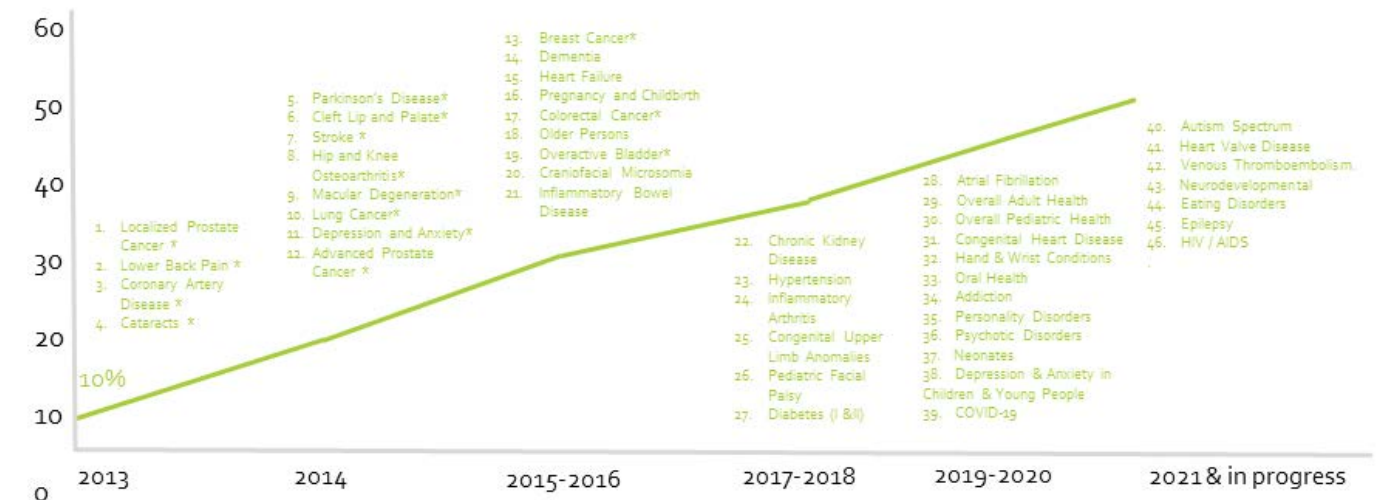
ICHOM facilitates a process with international clinical registry leaders and patient representatives to develop a global Set of Patient-Centered Outcome Measures that matter to patients, along with corresponding case-mix factors.

- Outcomes are defined around the medical condition, not the speciality or procedure
- The Set of Patient-Centered Outcome Measures is a "minimum set" focused on outcomes that matter most to patients
- Patient representatives are directly involved in defining the Set
- Outcomes include functional status, symptom burden, and health-related quality of life
- A "minimum set" of initial conditions/risk factors is included to facilitate meaningful comparison
- Time points and sources of data collection are clearly defined to ensure comparability of results



ICHOM's 40 Sets cover >57% of disease burden and are used globally

## GLOBAL BURDEN OF DISEASE COVERED BY ICHOM PATIENT-CENTERED OUTCOME MEASURES





# ICHOM's Benchmarking Platform can enable a step-change in evidence generation for improved patient care

- Benchmarks patient-group specific outcomes
- Enables population health analyses to address health equity and the social determinants of health
- Enables national and international comparison
- Includes longitudinal data
- Calculates risk adjustments
- Detects variances in care pathways
- Contains rich data for scientific research and evidence generation
- Intensifies best practice sharing
- Enables improvements of healthcare across the globe



## COLLECT

Data is collected and stored by the provider as defined by **Sets of Patient-Centered Outcome Measures** – outcomes already approved by global experts.

## VALIDATE

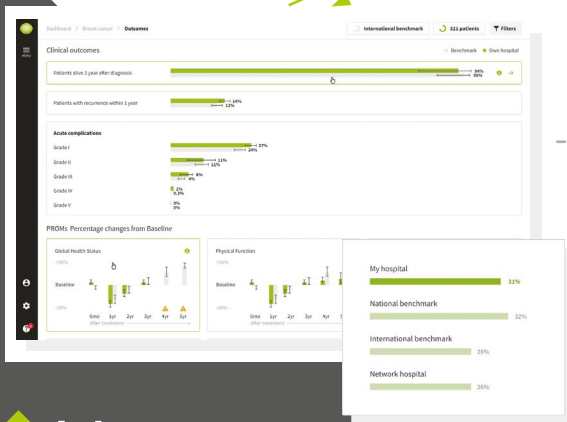
MRDM processes data according to ICHOM's working group calculation rules. Validated reports are sent to you – the data owners.

## REPORT

Access **interactive dashboards** based on Sets of Patient-Centered Outcome Measures and risk adjustment algorithms.

## IMPROVE

Visibility of benchmarked outcomes against best practices allows providers to make informed choices to improve patient care pathways.



The next phase for ICHOM is to scale adoption of our Sets and launch benchmarking and analytics to accelerate our impact

## What we have accomplished



**Develop** sets of Patient-Centered Outcome Measures that matter to patients in collaboration with global scientific leaders and patients  
*40 sets developed to date*

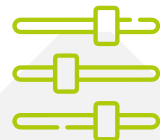


**Popularizesets** across the global ecosystem through the conference, ICHOM Connect, etc.  
**Implement** sets at providers to understand the path to scaling adoption  
*9 conferences, launched ICHOM Connect, estimated 50k downloads, "Globe" - global benchmark pilot*

## Where we are headed next



**Scale** adoption of sets by developing products that facilitate implementation (i.e. automate key steps of the implementation process)  
*Fully harmonized common term bank established across all sets; pilot deployment in the works sets being made machine-readable and interoperable with key standard*



**Benchmark** outcome measures globally to enable research, collaboration, as well as best practice identification and sharing  
*In discussion with software partners for the development of tech platform, a global network of clinical and technical partners forged.*

## ICHOM'S UPCOMING PROJECTS & GIVING OPPORTUNITIES

**Implementation Support Program:** Train providers and consultant partners on Set implementation and drive continuous development and improvement of ICHOM's products and services, to meet the needs of pioneers and leaders in outcomes measurement, benchmarking, and research

**ICHOM Set Implementation Demonstration Pilot Projects:** Implementing ICHOM's Sets of Patient-Centered Outcome Measures in U.S. hospitals to demonstrate effectiveness and analyze equity in healthcare performance and care delivered

**Benchmarking and Analytics Platform:** Continue the development of a web-based platform that provides the uniform and scientifically valid methodology to benchmark patient outcomes globally and enable comparisons of data from ICHOM's Sets in the U.S. against other High Income Countries

**Advance Popularization of Patient-Centered Outcome Measures and Provider Collaboration:** Innovate our conferences and enhance our ICHOM Connect platform to bring the value-based healthcare community together, share ideas on ICHOM Set implementation, outcome analytics, and data/outcomes visualization

Join us on the next stage of our journey  
**to unlock the potential of value-based healthcare**

To support our progress towards value-based healthcare, please contact our Development Officer, Melinda Gomez, at [m.gomez@ichom.org](mailto:m.gomez@ichom.org)