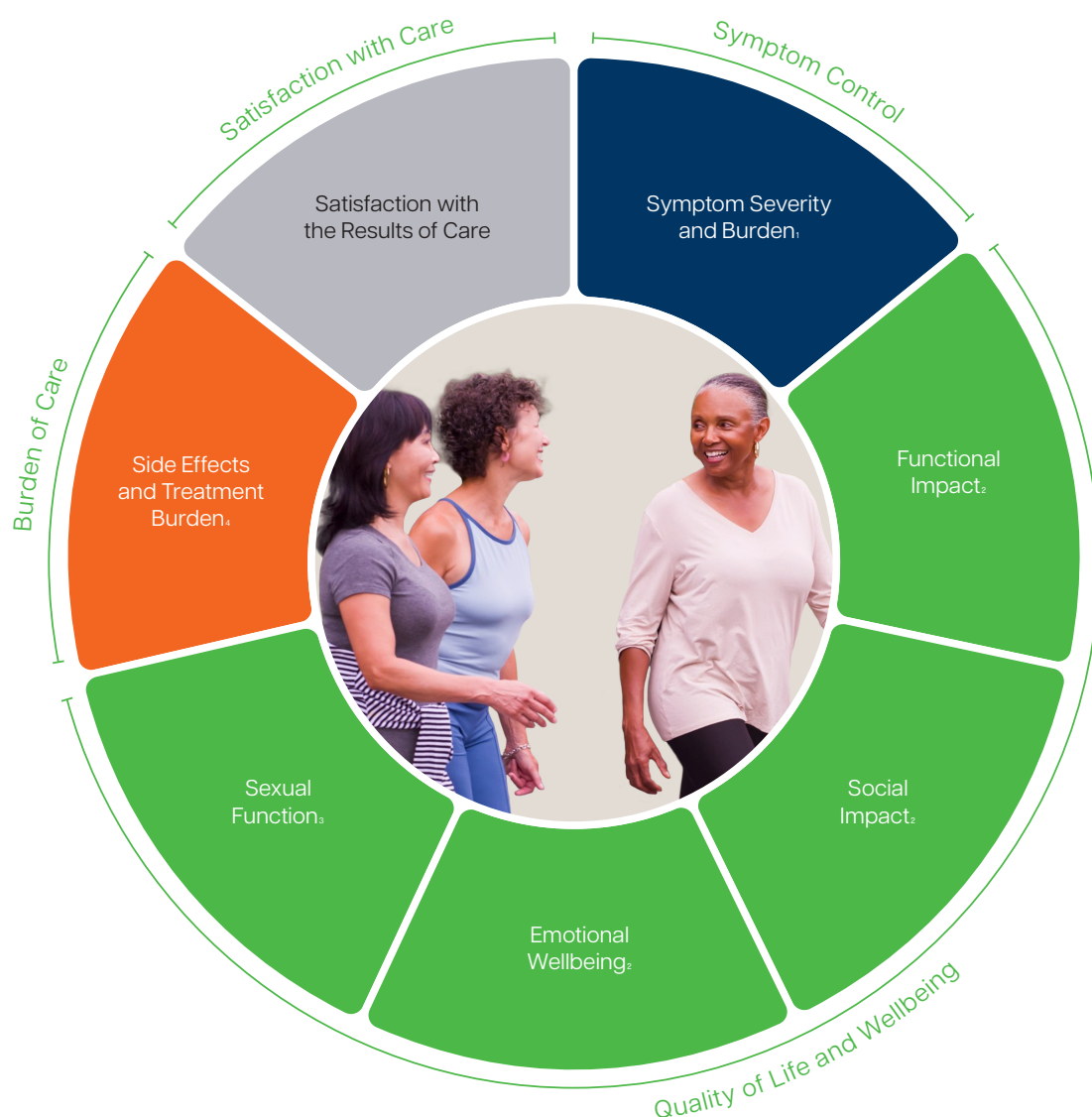


# Overactive Bladder

## Treatments covered

Types: Patient education | Behavioral modification | Pharmacological management | Intradetrusor Botox, PTNS, SNS | Ligament surgery

Stages: Early | Middle | Late



## Details

1 Tracked via the ICIQ-OAB module

2 Tracked via the OAB-q SF

3 Tracked via the ICIQ-MLUTSsex or the ICIQ-FLUTSsex

4 Tracked via the Treatment Benefit Scale

For a complete overview of this Set, including definitions for each measure, time points for collection, and associated risk factors, visit <http://www.ichom.org/medical-conditions/overactive-bladder/>

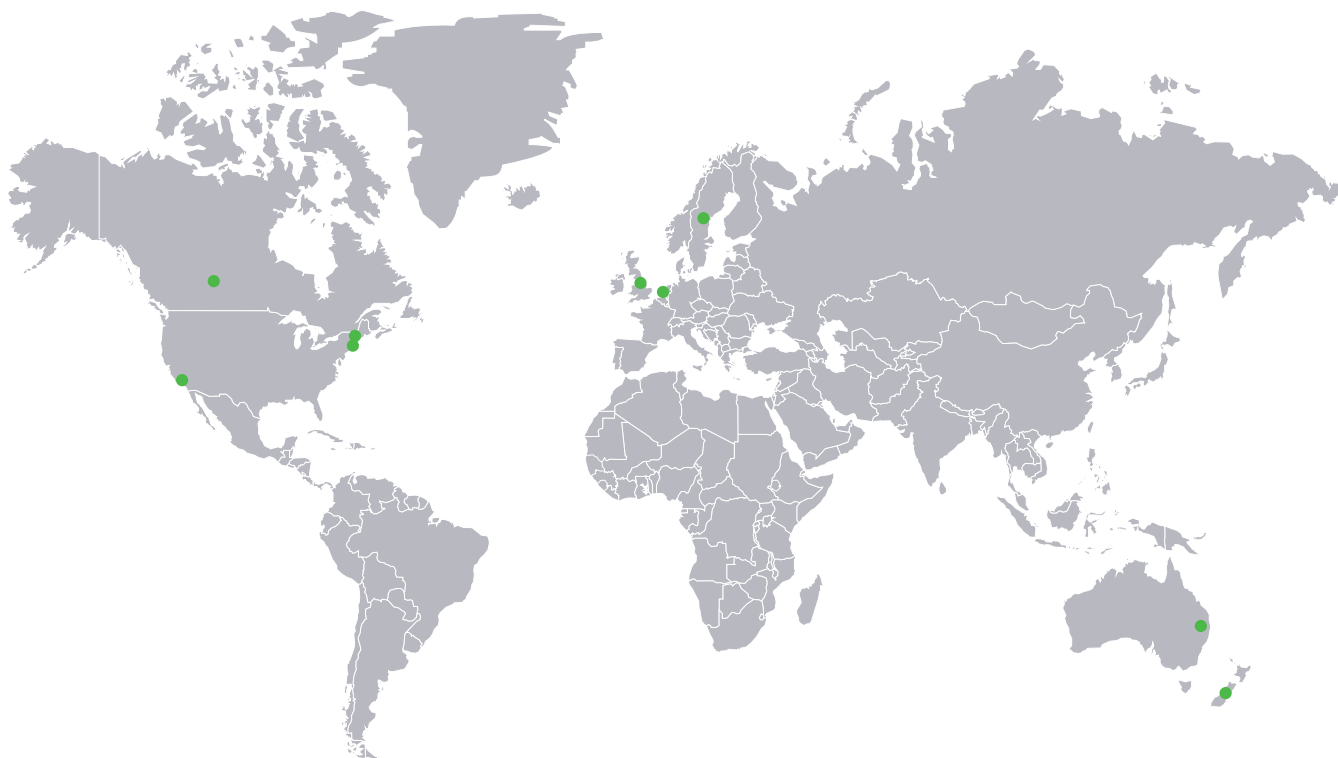
# Contributors

For more information about the process of developing a Set of Patient-Centered Outcome Measures, visit [ichom.org/how-we-work/](http://ichom.org/how-we-work/)

## The Sponsors



## The Working Group



### Australia

George Szonyi | Sydney Local Health District  
Kate Moore | St George Hospital, University of NSW

### Canada

Adrian Wagg | University of Alberta

### Netherlands

John Heesakkers | UMC St Radboud

### New Zealand

Peter Herbison | Dunedin School of Medicine

### Sweden

Ian Milsom | Sahlgrenska University Hospital

### United Kingdom

Linda Cardozo | King's College Hospital NHS

Nikki Cotterill | Bristol Urological Institute  
Philip Toozs-Hobson | Birmingham Women's NHS Foundation Trust

### United States

Anita Anderson\*  
Jennifer Anger | Cedars-Sinai Medical Center  
Caroline Foust-Wright | Massachusetts General Hospital

Ann Gormley | Hitchcock Dartmouth MC  
Jessica McKinney | Marathon PT  
Abraham Morse | Boston Urogyn  
Samantha Pulliam | Massachusetts General Hospital

\*Patient representative