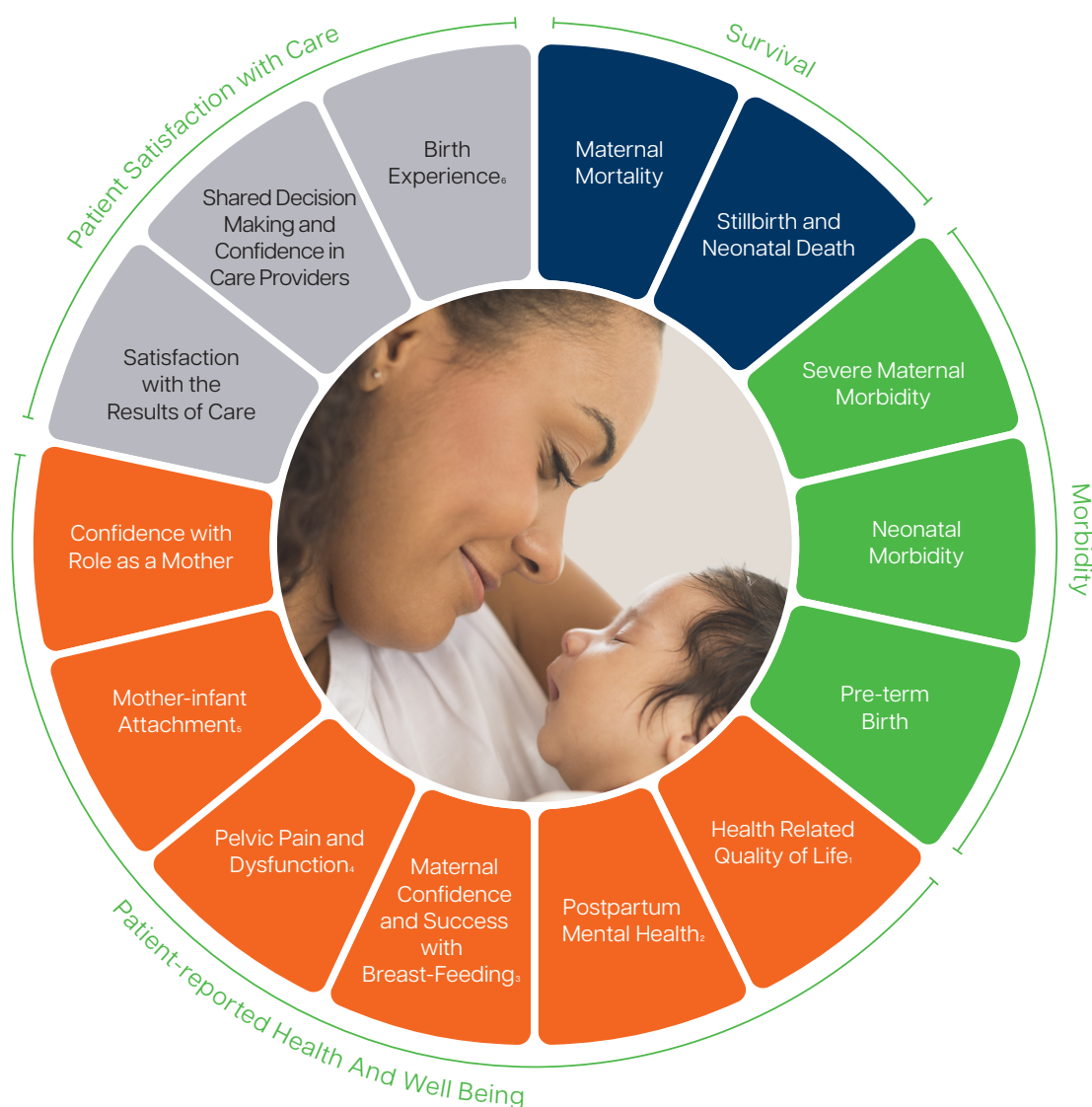


# Pregnancy & Childbirth

## Conditions covered

Types: Pregnancy | Labor and delivery | Up to six months postpartum

Stages: Early | Middle | Late



## Details

1 Tracked via the PROMIS GH-10, EQ-5D-5L, WHODAS V2.0-12, or VR-12

2 Evaluated with the Whooley Questions and EPDS-3A, follow-up with the EPDS as needed

3 Tracked via the BSES-SF

4 Tracked via the ICIQ-SF and RFIS, Wexner and the PROMIS SFFAC102

5 Tracked via the MIBS

6 Tracked via the BSS-R

For a complete overview of this Set, including definitions for each measure, time points for collection, and associated risk factors, visit <http://www.ichom.org/medical-conditions/pregnancy-and-childbirth/>

# Contributors

For more information about the process of developing a Set of Patient-Centered Outcome Measures, visit [ichom.org/how-we-work/](http://ichom.org/how-we-work/)

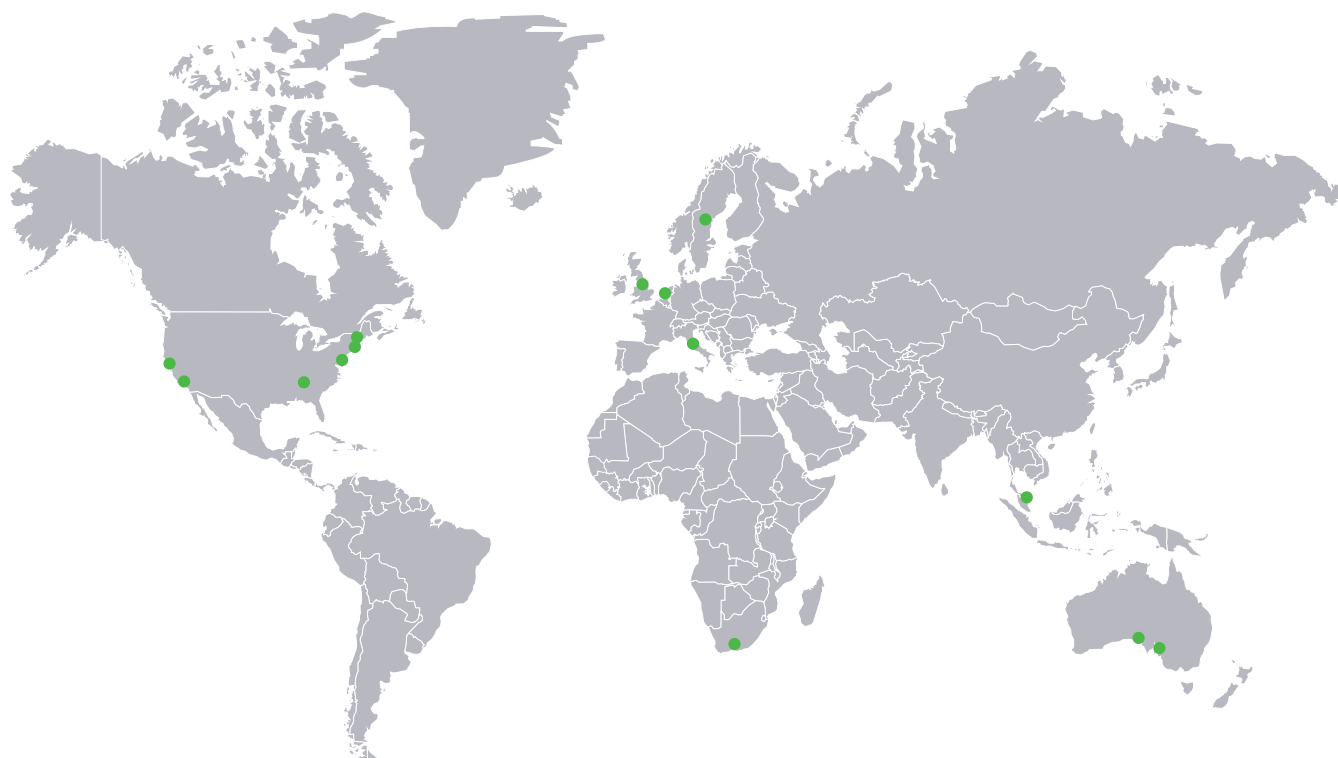
## The Sponsors



**ACI** NSW Agency  
for Clinical  
Innovation



## The Working Group



### Australia

Tessa Kowaliw\* | South Australian Reform Association Inc.

Rod Petersen | Women's and Babies' Division, WCHN

### Italy

Anna Marie Speciale | American College of Nurse Midwives

### Malaysia

J Ravichandran R Jeganathan | National Obstetric Registry

Shamala Devi Karalasingam | National Obstetric Registry

### Netherlands

Gouke Bonsel | Erasmus Medical Center

Arie Franx | Utrecht Medical Center

Floris Groendendaal | Utrecht Medical Center

Irwin Reiss | Erasmus Medical Center

Marije de Ruiter | Utrecht Medical Center

### South Africa

Stefan Gebhardt | Tygerberg Hospital

### Sweden

Isis Amer-Wahlin | Sveus, Stockholm County Council, Karolinska Institute

### United Kingdom

Matthew Coleman | University Hospital Southampton, NHS

James Duffy | Crown Initiative

### United States

Allyson Brooks | Hoag Memorial Hospital

Tracy Flanagan | Kaiser Permanente

Meridith Greene\* | Massachusetts General Hospital

Elliott Main | Sutter Pacific Medical Foundation, CMQCC

Marlin Mills | Hoag Memorial Hospital

Malini Nijagal | Boston Medical Center

Michelle Owens | University of Mississippi Medical Center, ACOG

Carol Sakala | National Partnership for Women & Families

Rachel Thompson | The Dartmouth Institute for Health Policy and Clinical Practice

\*Consumer representative

## The Steering Committee for Set Update and Primary Subset Development

<b>Australia</b> Tessa Kowaliw* Rod Petersen Valerie Slavin	<b>Kenya</b> Elizabeth Opondo	<b>Netherlands</b> Arie Franx Femke Heddema Hiske Ernst-Smelt	<b>Switzerland</b> Anne Steiner
<b>Ghana</b> Koiwah Koi-Larbi*	<b>Malaysia</b> J Ravichandran R Jeganathan Shamala Devi Karalasingam	<b>South Africa</b> Nicole Daniels*	<b>United Kingdom</b> Caroline J Hollins Martin Colin Martin
			<b>United States</b> Carol Sakala

\*Consumer representative

## The Sponsors of Set Update and Primary Subset Development



# Updates

As ICHOM strives to keep our Sets up to date with clinical advancements and implementation requirements, we aim to update all of our Sets regularly. We have worked with a small group of experts from the original working group, as well as users of the Set, and consumer representatives to make necessary changes to the Set in order to ensure that it is up to date.

## Timeline Update

Added a minimal timeline with 3 timepoints and make the 5-point timeline aspirational

## Case-mix Variables Updates

Added ICHOM harmonized sex variable

Added ICHOM harmonized gender variable

Added variable stratifying BMI

Changed alcohol use, drug use, and tobacco use questions from clinical to patient-reported, changed wording of questions, and added supporting definitions

Updated obstetrics history to include additional response options:

- 5 = Loss of a pregnancy before 20 weeks (5 months) of pregnancy (miscarriage)
- 6 = Pregnancy outside the uterine cavity (also known as Ectopic Pregnancy)
- 7 = Pregnancy-related diabetes (i.e. gestational diabetes)
- 8 = Pregnancy-related hypertension (i.e., preeclampsia, eclampsia, gestational hypertension)
- 9 = Assisted Reproductive Therapy (i.e., IVF (in-vitro fertilization) and ICSI (intracytoplasmic sperm injection))
- 10 = Other

Added comorbidities variable

Social support: replace SIMSS with MSPSS 3-item

Added Medication variable

## PROMs/PREMs Updates

Add shared decision making for pain relief questions as a PREM

HRQL harmonized variable with 4 PROM options:

- EQ-5D-5L
- PROMIS Global Health-10 (PROMIS GH-10)
- World Health Organization Disability Assessment Schedule version 2.0 (WHODAS V2.0)
- Veterans Rand 12-item Health Survey (VR-12)

Replace PHQ-2 with Whooley Questions for post-partum depression screening

Add postpartum anxiety screening using EPDS-3A

Replace Wexner Incontinence Scale with Revised Fecal Incontinence Scale and flatus incontinence question